

Columbia University Medical Education Building, New York City, 2010 to 2017 -Completed

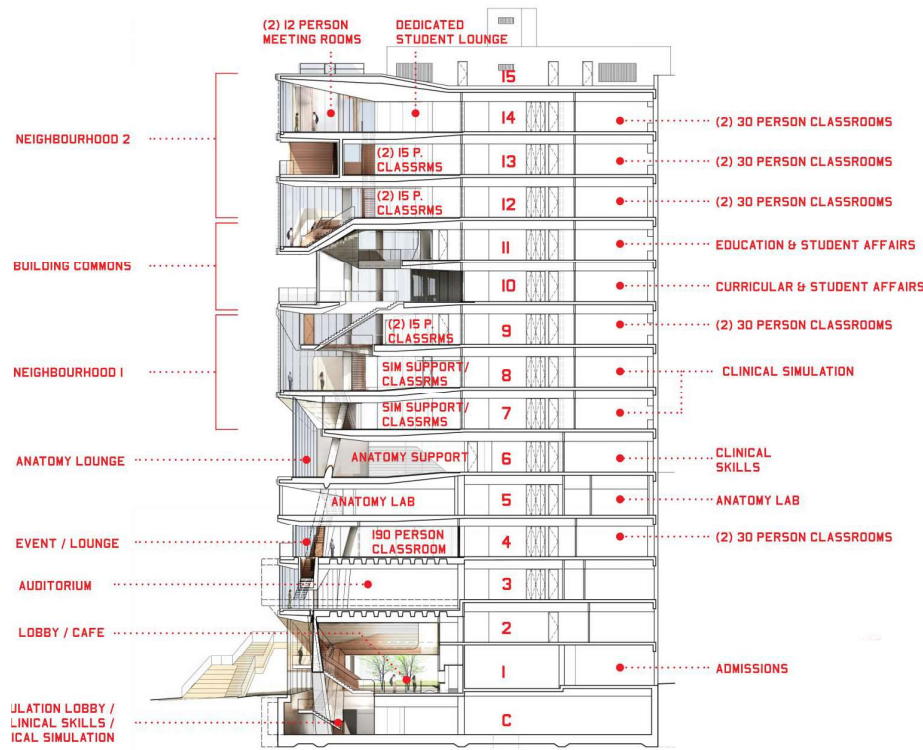
The new 99,000 sf, 14 story tower houses the Medical and Graduate Education Programs while functioning as the principal social/gathering space for student life. The program for the building includes the following principal elements: Ground Floor Lobby and Lounge; Ground Floor Café; Auditorium, Large Lecture Room/Event Space; Classrooms; Administrative; Sky Cafe/ Student Commons; Outdoor South and West facing terraces; Simulation and Clinical Skills Center; Anatomy Lab. The social space is unified as “vertical campus” along the south side of the building



view of the site from along the hudson river



"Study Cascade"

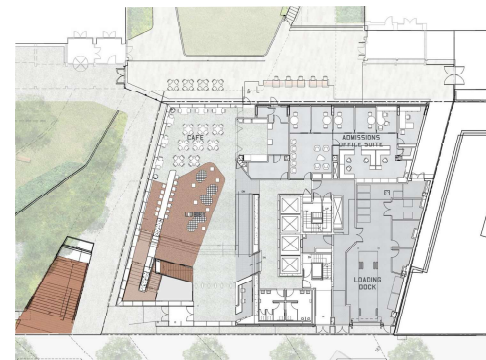


longitudinal section looking west

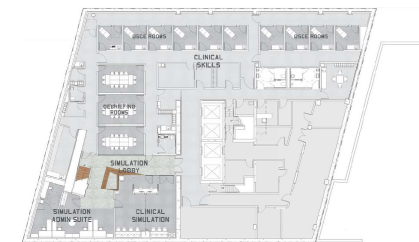
CONCEPT OVERVIEW



site plan showing link to campus and view



ground floor plan



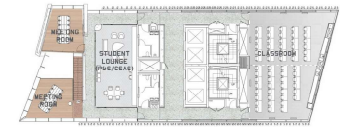
basement plan-simulation center



view of building from the south



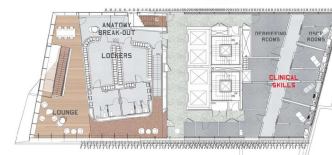
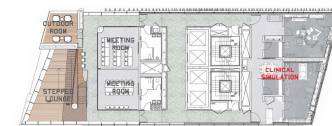
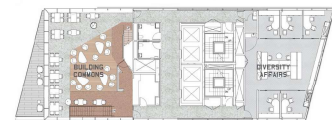
detail view study cascade



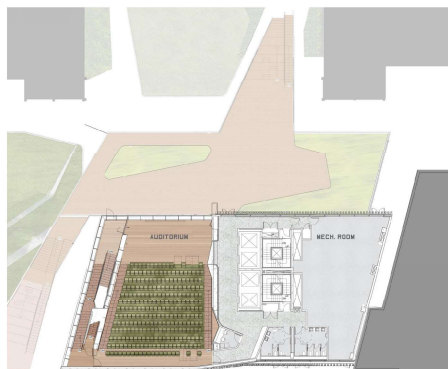
12th through 14th floor plans-typical academic



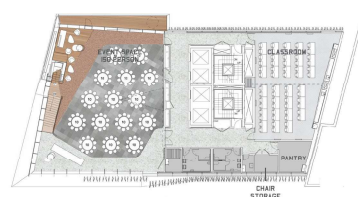
10th and 11th floor plans- student commons



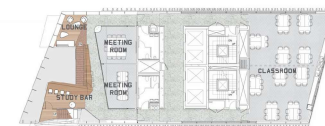
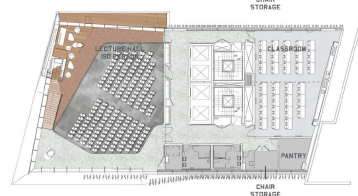
6th floor plan-anatomy entry and clinical skills and above 7th floor plan clinical simulation



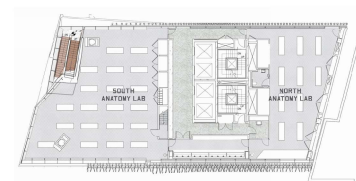
3rd floor plan-auditorium and exterior deck



4th floor plan-multipurpose room (shown in event and classroom layouts) and typical-classrooms



5th floor pan-anatomy lab and above typical academic floor

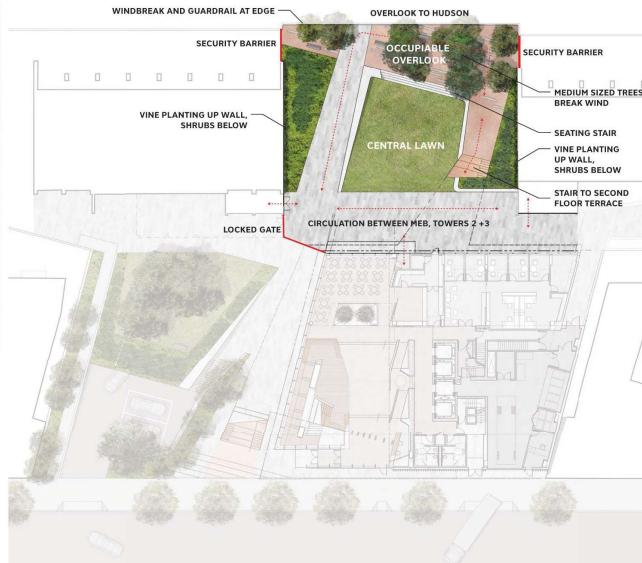




WEST COURT

10,000 SF LANDSCAPE SPACE
MEB AND TOWER USERS

LANDSCAPE BUILT ABOVE
EXISTING PARKING STRUCTURE
LANDSCAPE ORIENTS VIEW TO HUDSON
RIVER AND GW BRIDGE.
OCCUPIABLE OVERLOOK
UNDER PROTECTIVE TREE CANOPY,
CENTRAL LAWN FOR EVENTS AND EVERYDAY USE



section through west court and deck showing
wind mitigation strategy

west court program



west court-existing condition



TOWER 2 PARK

3650 SF PARK SPACE
CONTROLLED PUBLIC ACCESS

LANDSCAPE BUILT ON ELEVATED MOUND
ABOVE GARAGE ENTRY DRIVE
PARK-LIKE ATMOSPHERE WITH LARGE
SHADE TREES, OCCUPIABLE LAWN,
AND FLOWERING BORDER
OVERLOOK TO STREET EDGE



COMFORT LEVELS

- C1+ Comfort Level 1 (C1) - Fast Walking
- C2 Comfort Level 2 (C2) - Leisurely Walking
- C3 Comfort Level 3 (C3) - Standing, Sitting for short exposure
- C4 Comfort Level 4 (C4) - Standing, Sitting for long exposure



FIGURE 14b SUMMARY OF PREDICTED COMFORT LEVELS FOR PEDESTRIAN-LEVEL WIND SPEEDS

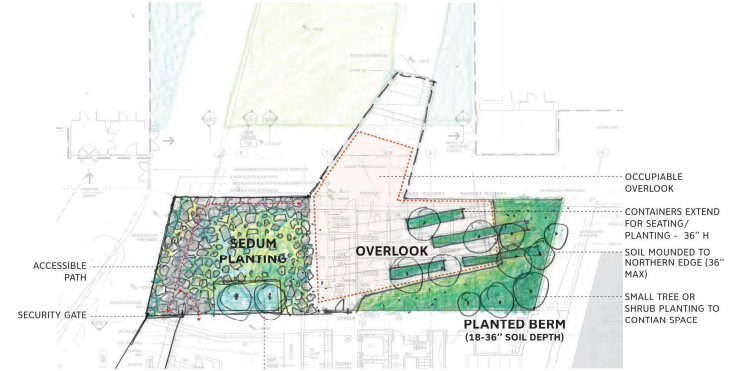
PEDESTRIAN COMFORT WITH NO MITIGATION STRATEGIES

east court program

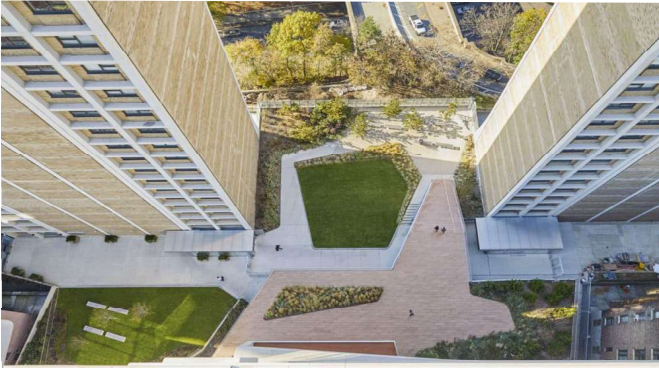
wind tunnel results



view of deck looking east



2nd floor terrace plan



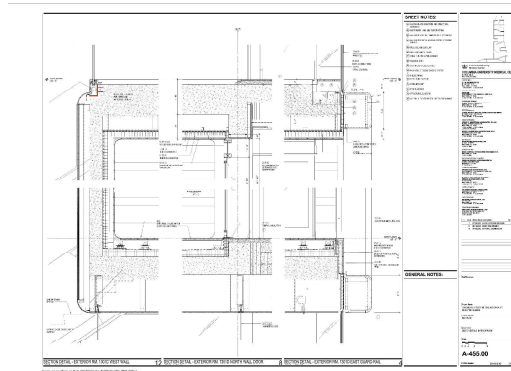
aerial view



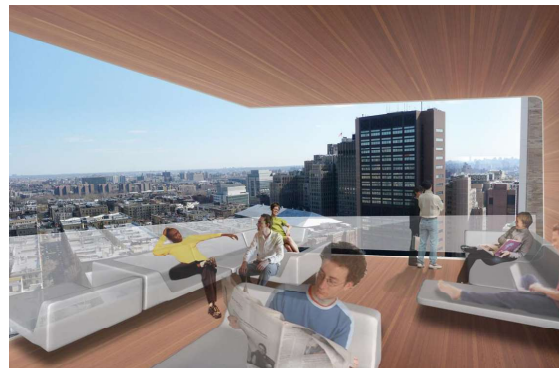
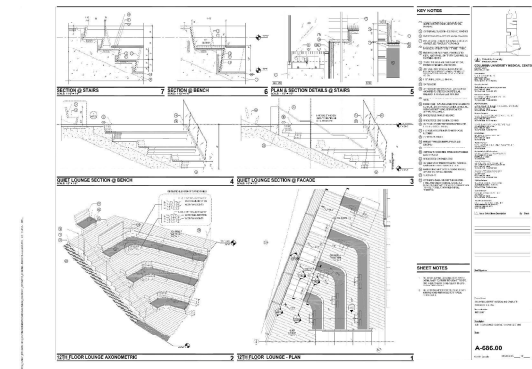
south lawn looking north



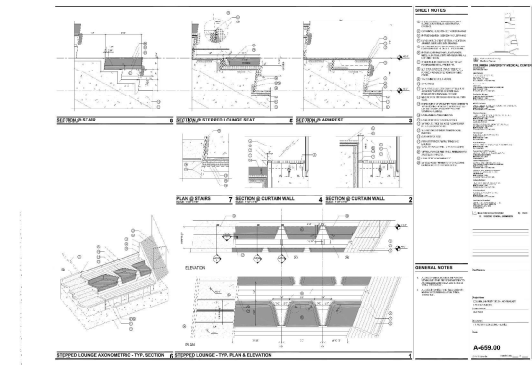
view of study cascade, with student commons and outdoor rooms



details outdoor rooms

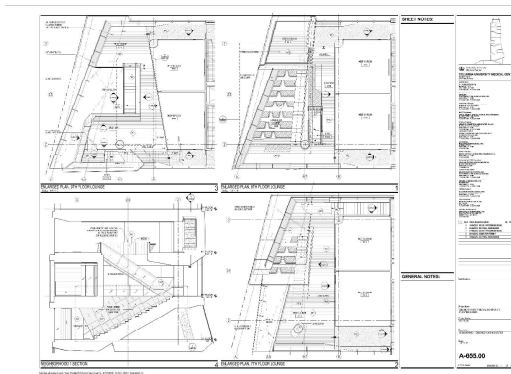


interior outdoor rooms

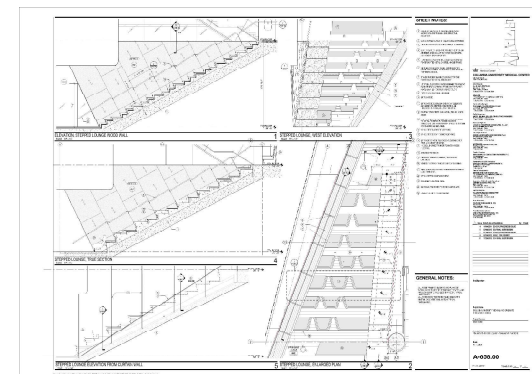


student commons

INSTRUCTIONAL SPACES: INFORMAL (left panel) and FORMAL (right panel)

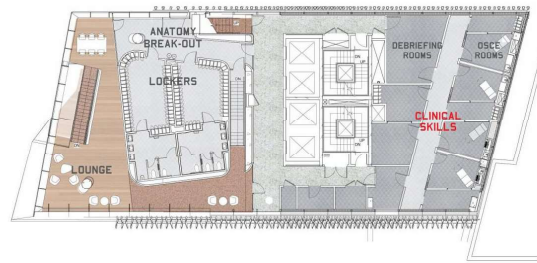


study cascade stepped lounges with details

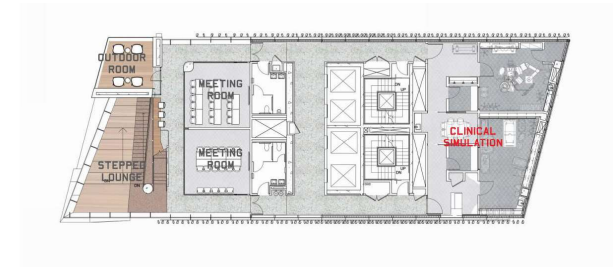




typical classroom interior



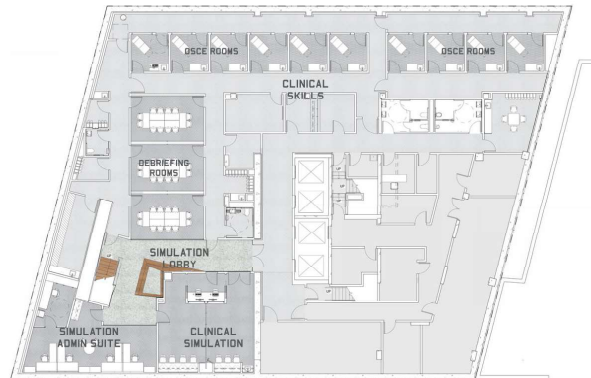
6th floor-osce/clinical skills



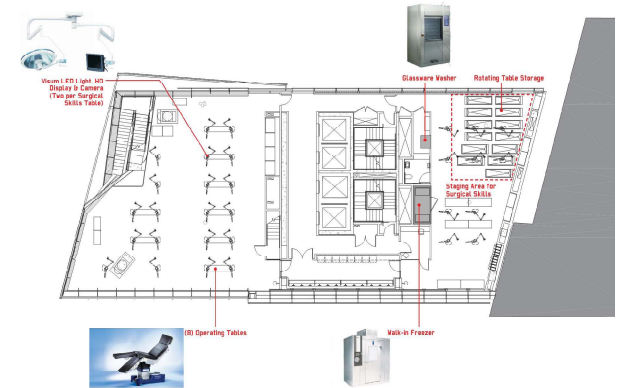
7th and 8th floors-clinical simulation



view of OSCE suite along observers corridor



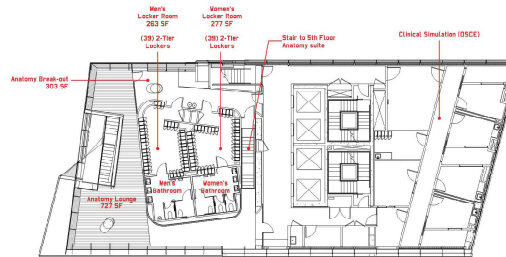
lower level-osce/clinical skills



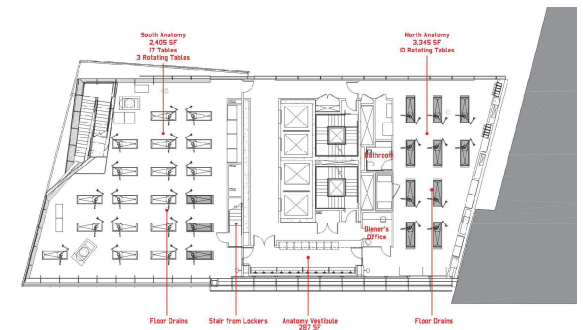
5th floor-anatomy suite set up for surgical skills training (off season use)



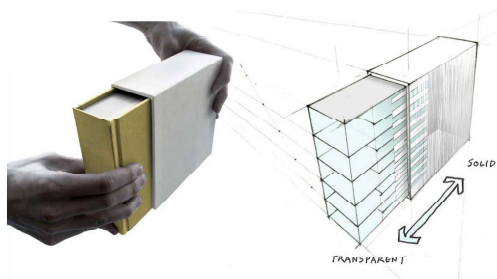
early image of the anatomy lab



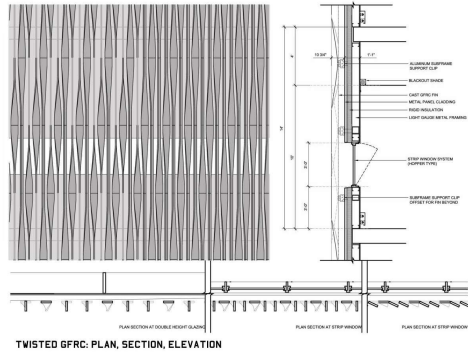
6th floor anatomy changing rooms



5th floor-anatomy suite



facade concept



TWISTED GFRC: PLAN, SECTION, ELEVATION

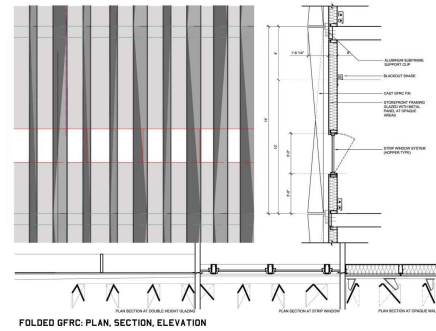


EAST ELEVATION

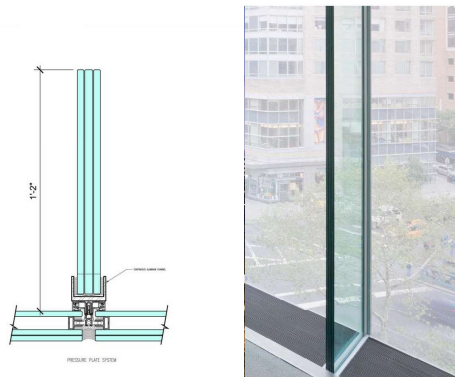
PROJECT GLAZING AREA: 40%



aluminum twisted fin rain screen over backup wall

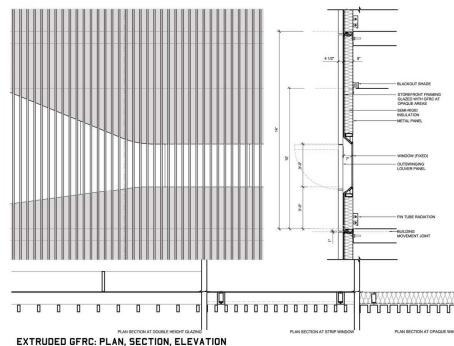


FOLDED GFRC: PLAN, SECTION, ELEVATION



glass fin wall f

FACADE DEVELOPMENT



EXTRUDED GFRC: PLAN, SECTION, ELEVATION

variations on rainscreen concept



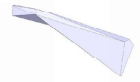
east elevation

Front

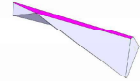
3.1 Fabrication Considerations

3.1.5 Single Fin Assembly

The proposed facade system is a 140mm thick vertical glass fin. It is a single fin assembly with a 140mm thick glass fin, a 140mm thick shadow box, and a 140mm thick insulated vision glass. The fin is supported by a 140mm wide gfrfc band. The fin is supported by a 140mm wide gfrfc band. The fin is supported by a 140mm wide gfrfc band.



Detail the design with all glass fin details - including fasteners and weathering details.

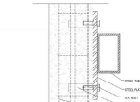
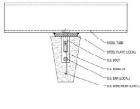


Modeling for air flow - showing the location and details of air flow and weathering details.

11/11/2011 10:00 AM 11/11/2011 10:00 AM 11/11/2011 10:00 AM 11/11/2011 10:00 AM

3.2 Fin Assembly

The proposed facade system is a 140mm thick vertical glass fin. It is a single fin assembly with a 140mm thick glass fin, a 140mm thick shadow box, and a 140mm thick insulated vision glass. The fin is supported by a 140mm wide gfrfc band. The fin is supported by a 140mm wide gfrfc band. The fin is supported by a 140mm wide gfrfc band.



Modeling for air flow - showing the location and details of air flow and weathering details.

11/11/2011 10:00 AM 11/11/2011 10:00 AM 11/11/2011 10:00 AM 11/11/2011 10:00 AM



SHADOW BOX
INSULATED VISION GLASS w/ CERAMIC FRIT
1" AIR SPACE
PAINTED METAL PANEL
INSULATED VISION GLASS w/ CERAMIC FRIT
GFRFC BAND (4-1)

CV-3 DETAIL



BUILDING ELEVATIONS

front

3.2 Fin Assembly

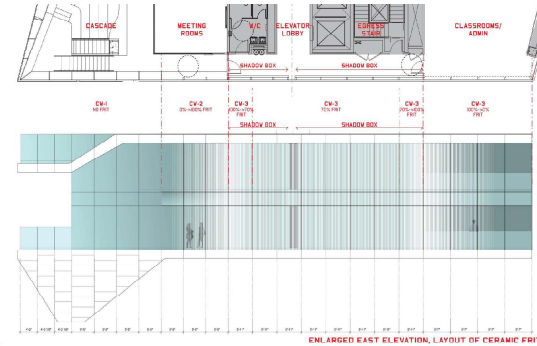
The proposed facade system is a 140mm thick vertical glass fin. It is a single fin assembly with a 140mm thick glass fin, a 140mm thick shadow box, and a 140mm thick insulated vision glass. The fin is supported by a 140mm wide gfrfc band. The fin is supported by a 140mm wide gfrfc band. The fin is supported by a 140mm wide gfrfc band.



A single fin assembly is used for office and library to provide visual architectural expression.



11/11/2011 10:00 AM 11/11/2011 10:00 AM 11/11/2011 10:00 AM 11/11/2011 10:00 AM



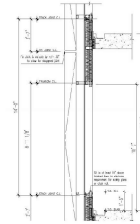
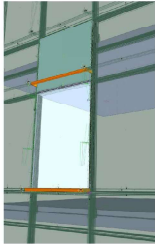
ENLARGED EAST ELEVATION, LAYOUT OF CERAMIC FRIT

23

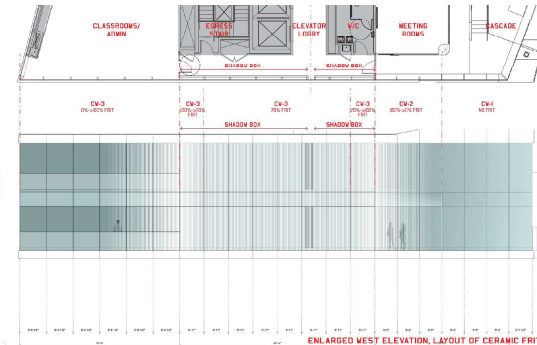
Front

3.2 Fin Assembly

The proposed facade system is a 140mm thick vertical glass fin. It is a single fin assembly with a 140mm thick glass fin, a 140mm thick shadow box, and a 140mm thick insulated vision glass. The fin is supported by a 140mm wide gfrfc band. The fin is supported by a 140mm wide gfrfc band. The fin is supported by a 140mm wide gfrfc band.



11/11/2011 10:00 AM 11/11/2011 10:00 AM 11/11/2011 10:00 AM 11/11/2011 10:00 AM



ENLARGED WEST ELEVATION, LAYOUT OF CERAMIC FRIT

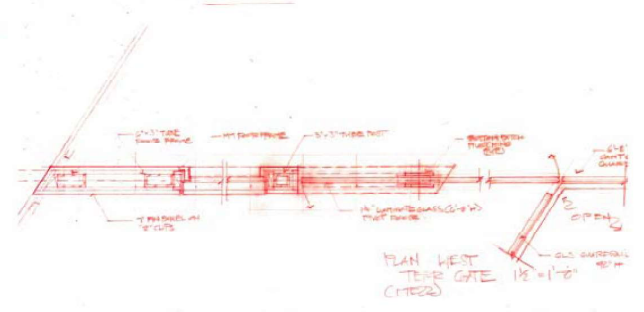
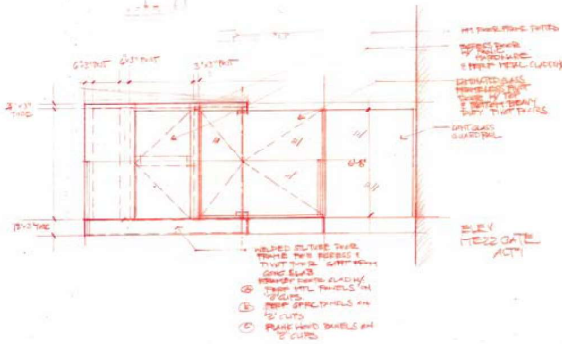
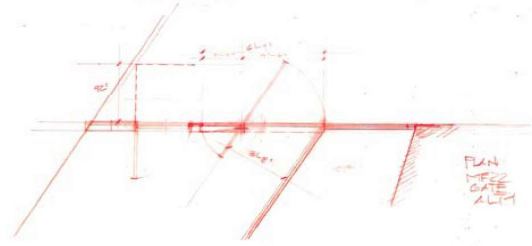
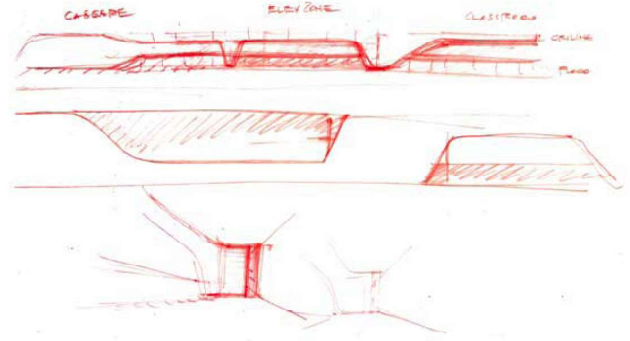
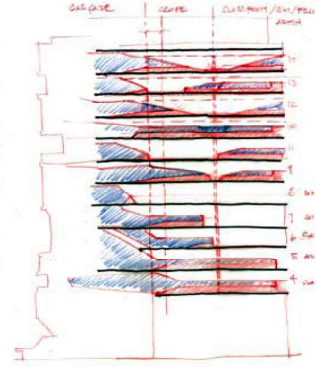
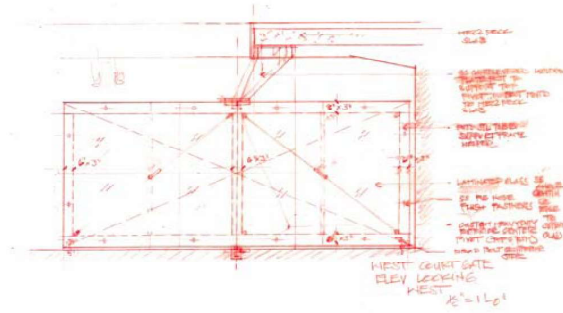
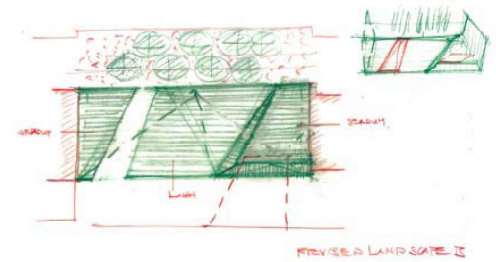
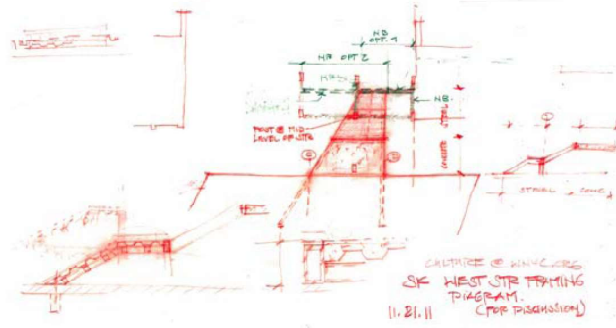
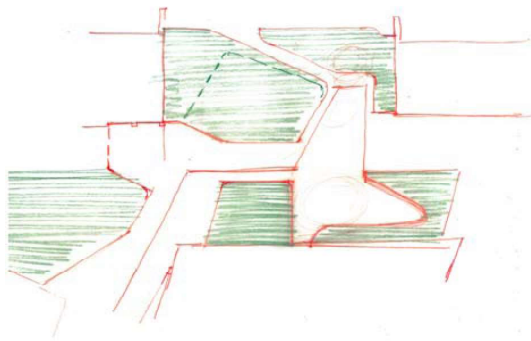
34



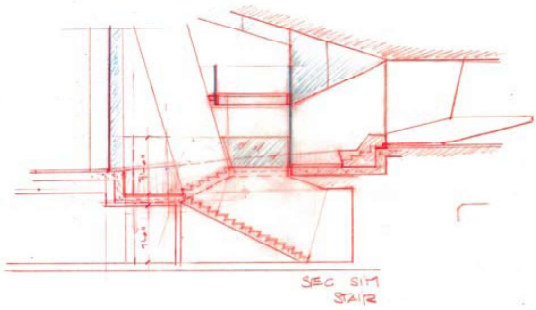
mock up

ve strategies to retain gfrfc faceted fin

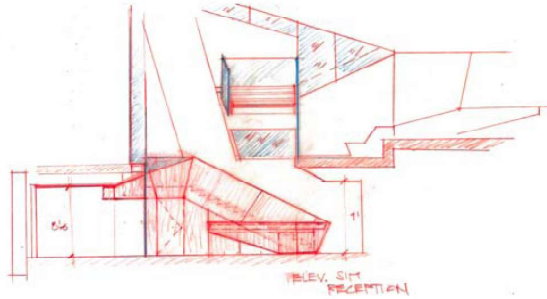
adoption of frit alternative



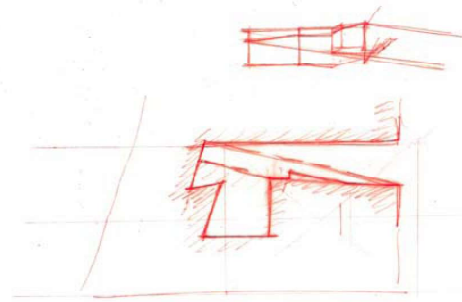
cumc - sample development sketches



SEC SIM STAIR

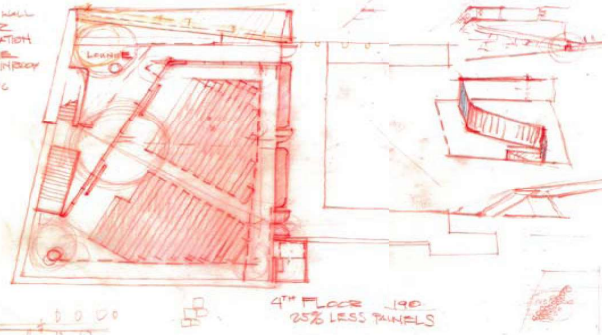


ELEV. SIM RECEPTION

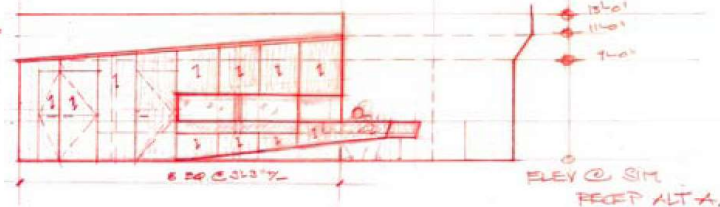
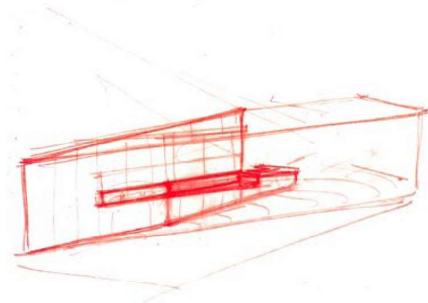


①

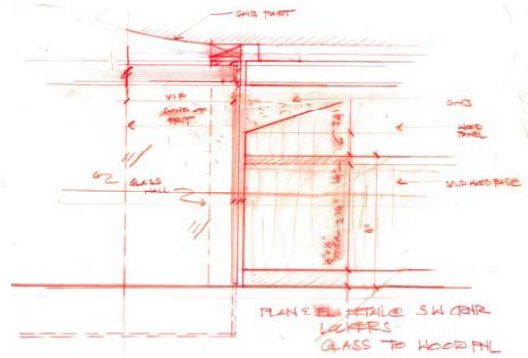
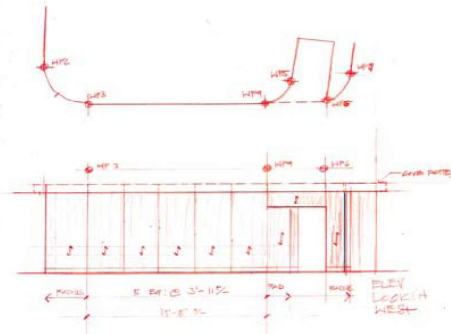
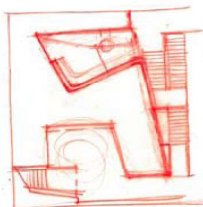
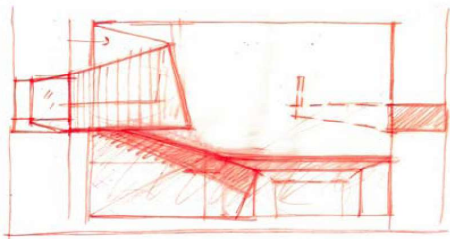
- ① ② ③ ④ ⑤
- ① SWANE HALL
- ② STAIRS
- ③ + ④ RECEPTION
- ⑤ LUNNETT
- ⑥ + ⑦ HALLWAY
- ⑧ = ACCESS



4TH FLOOR 190 25% LESS PANELS



ELEV @ SIM RECEPT ALT. X.



PLAN @ RECEPTION SW CORN
LOOKERS
GLASS TO HOOD PH

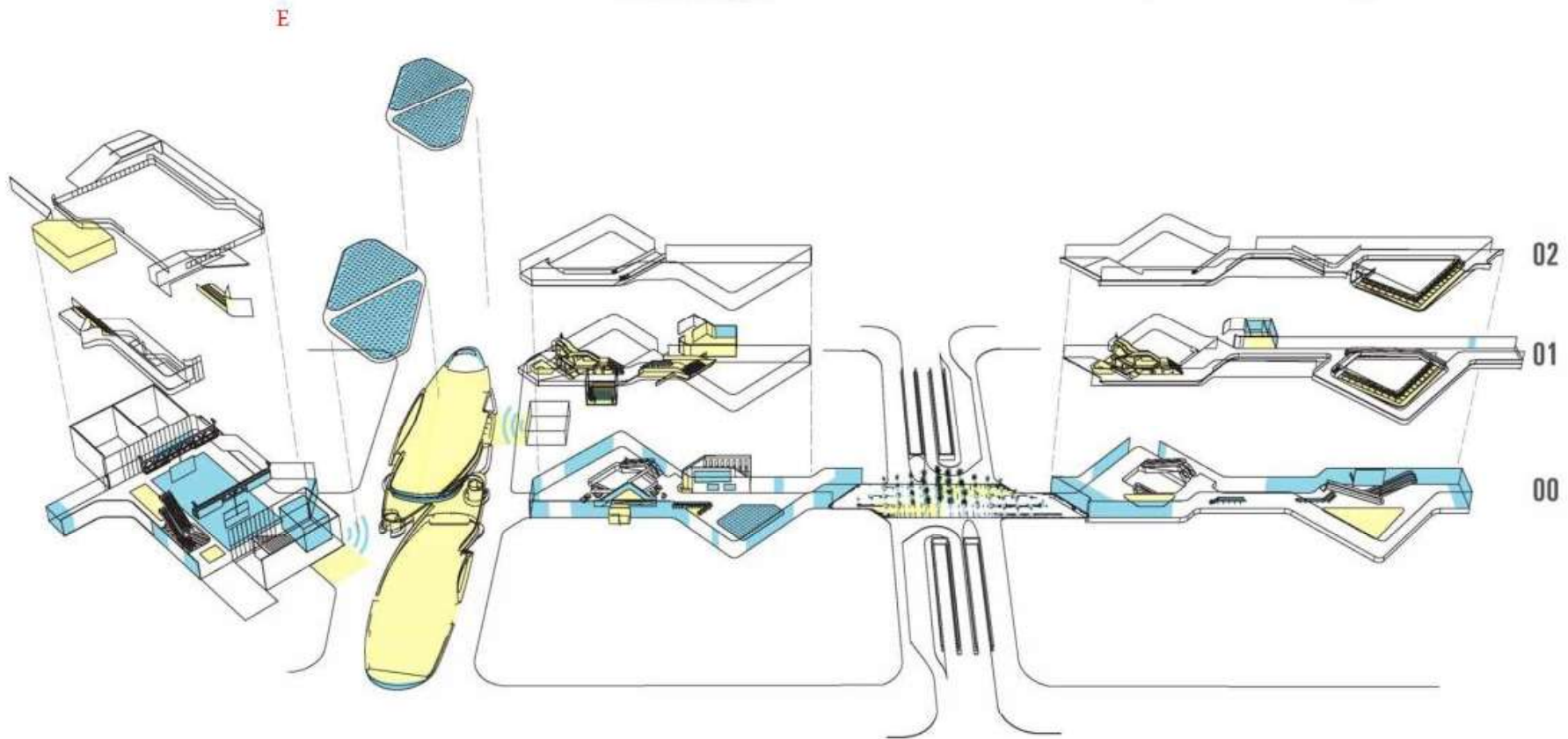
TwoFour54 Media Zone, Abu Dhabi, UAE - Project 2010

To bring a sense of urbanity to a 2 million sf film studio and media mixed-use development, the intervention proposes a new form of public space, a “media street” consisting of a sequence of interior and exterior spaces integrated by an array of media installations, innovative architectural materiality and programmatic invention. Additionally, the project entailed the fit out and interior design for a 245,000 sf headquarters for a media and film production company. Interiors included offices, exhibition spaces, training academy, business incubator, archive and experimental theater.



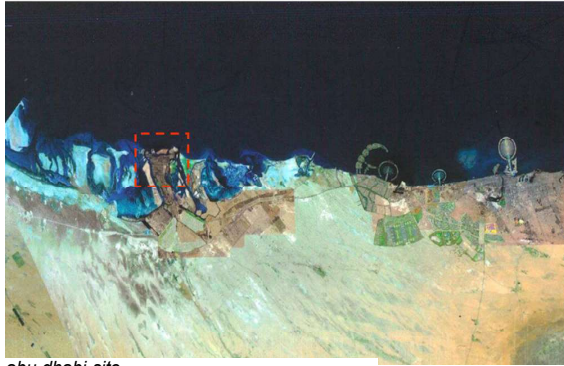
WORK SPACE

PUBLIC SPACE



digital realm overview -media installation in blue, social hub in yellow

CONCEPT OVERVIEW



abu dhabi-site



television film studios



media cafe



ds+r competition scheme-ribbons



un studio competition scheme-towers on a base



media free zone



ds+r competition scheme-ribbons



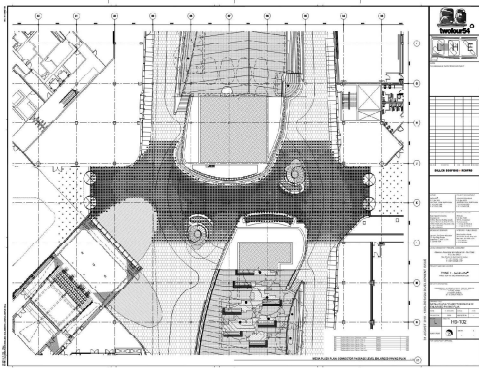
media plaza-exhibition



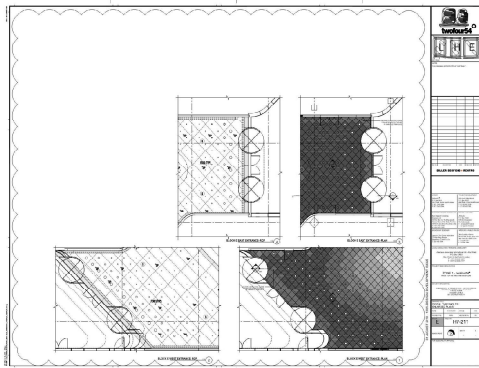
media plaza-



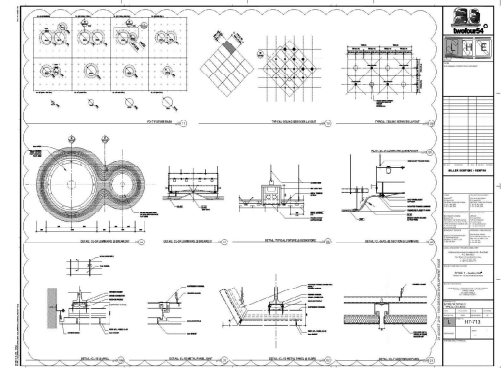
clockwise: abu dhabi's largest carpet in the world; paving precedents; darkness enhancing visibility; stage light chiaroscuro
CONCEPT OVERVIEW



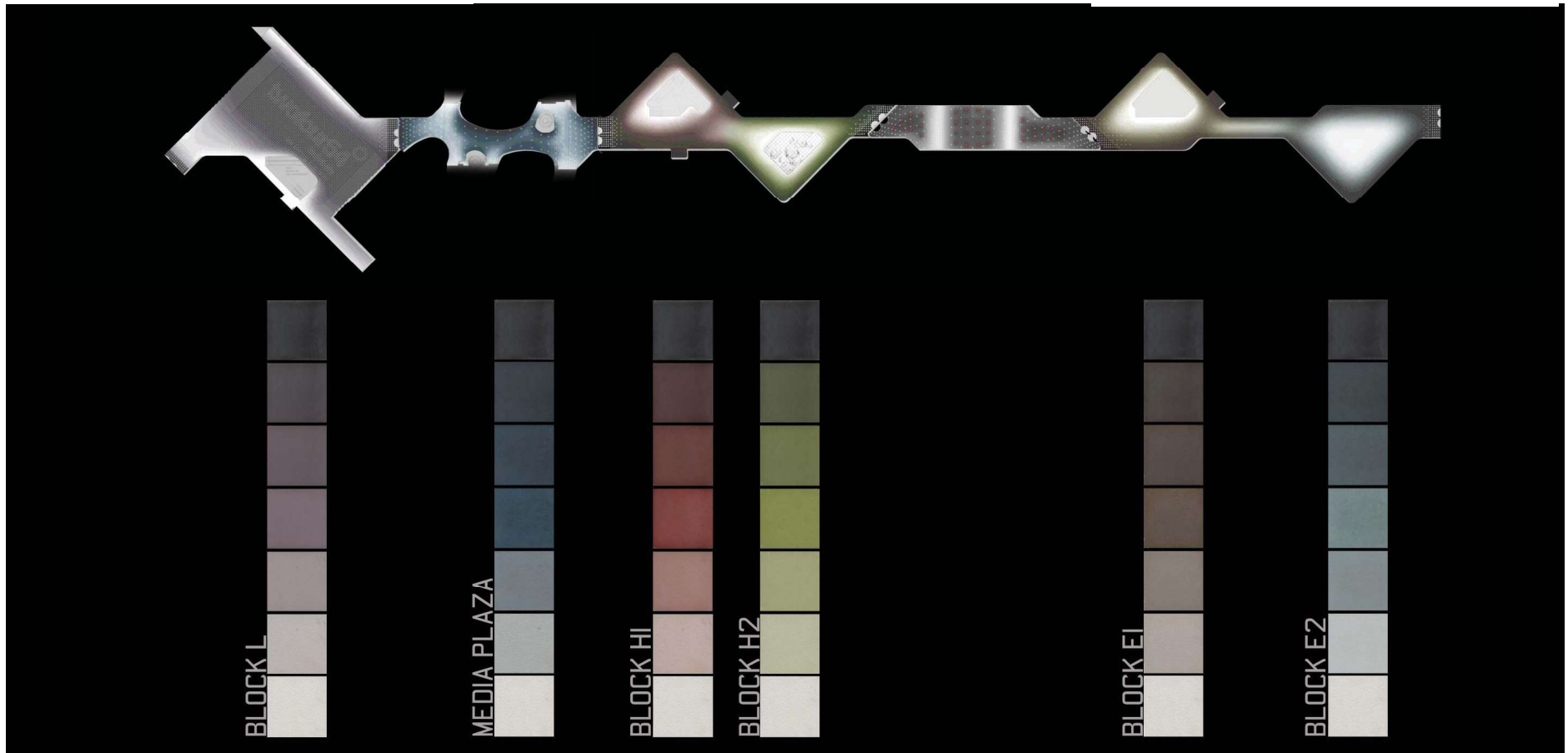
sample section of digital carpet-media plaza passage

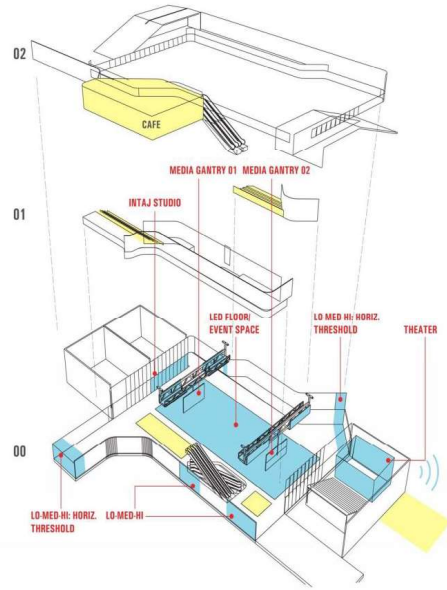


sample section of digital carpet- block entries showing rcp concept

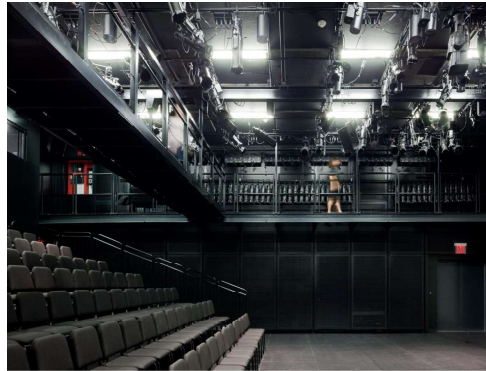


custom metal ceiling panels with integrated lighting

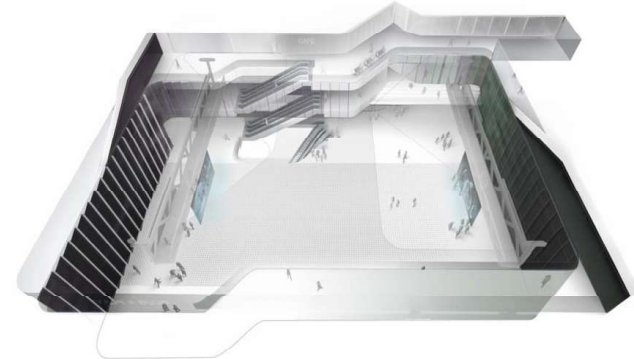
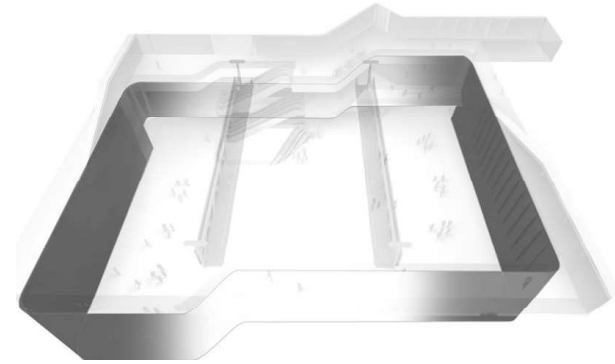




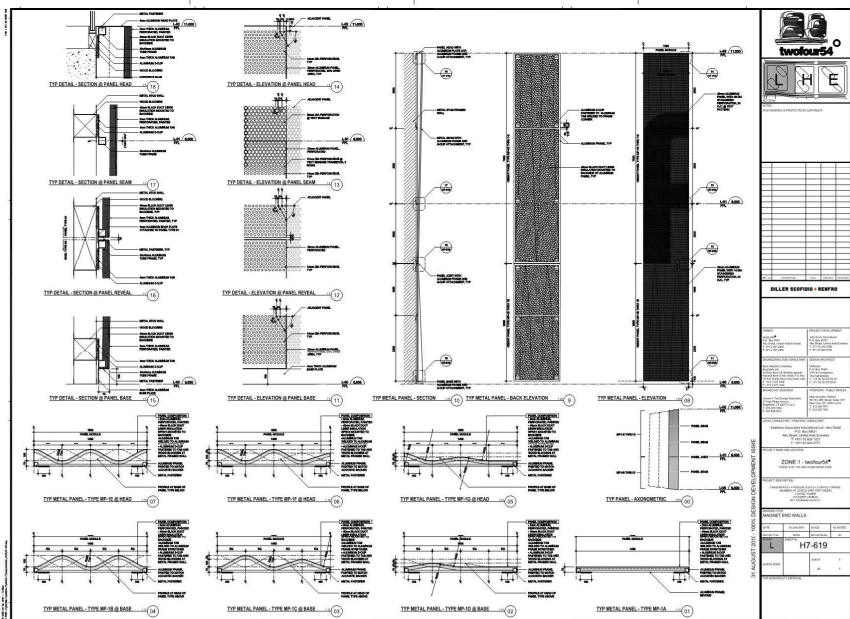
magnet event space



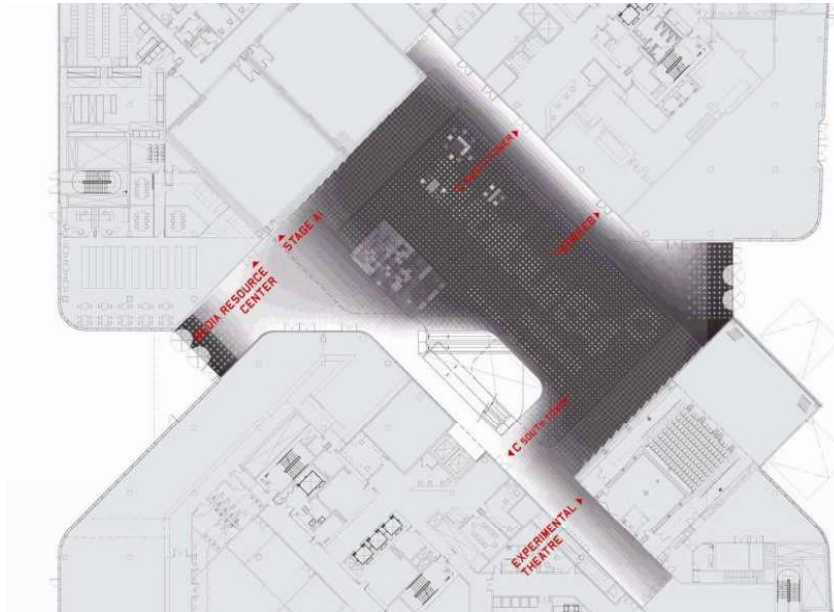
julliard black box performance space



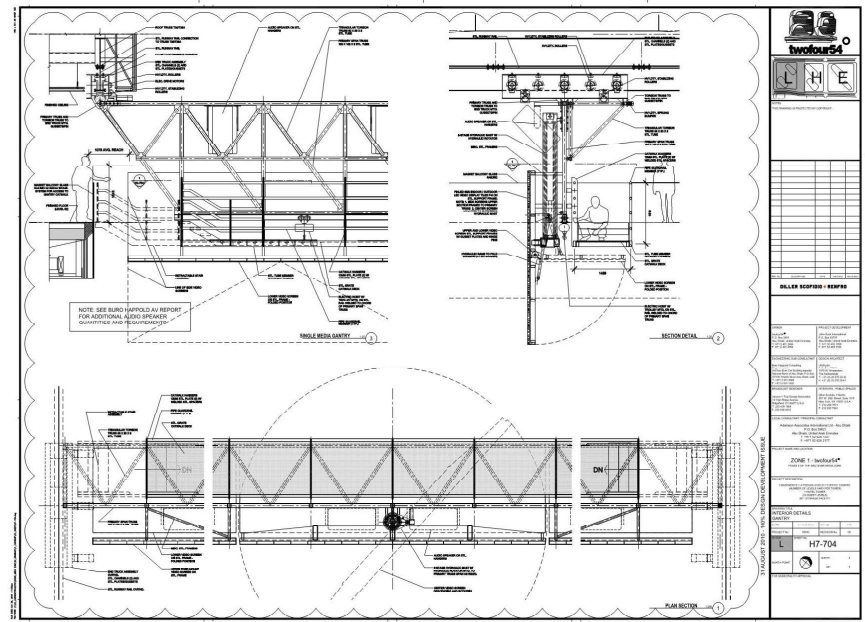
magnet dual gantry being deployed



magnet wall panel system



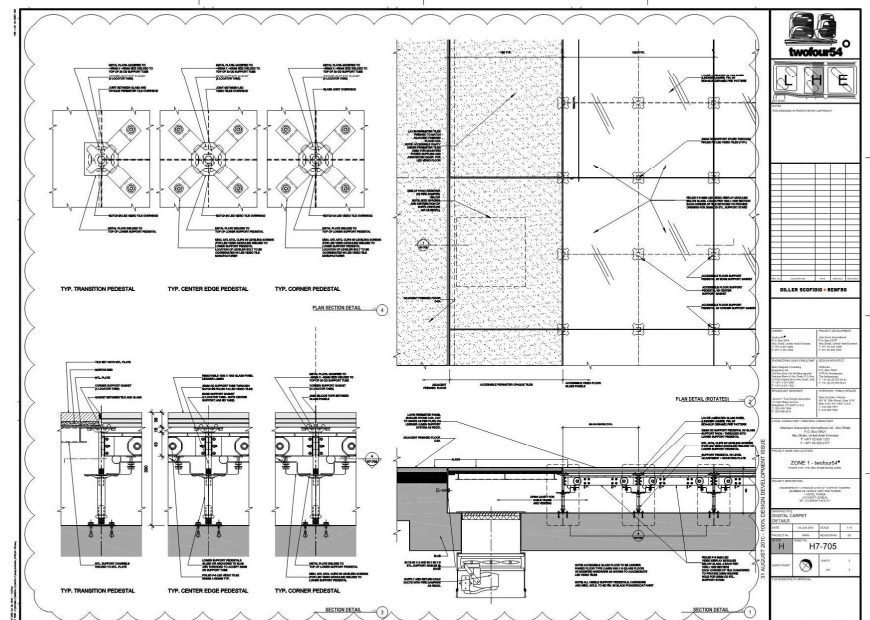
plan magnet atrium and principal entries



magnet gantry details



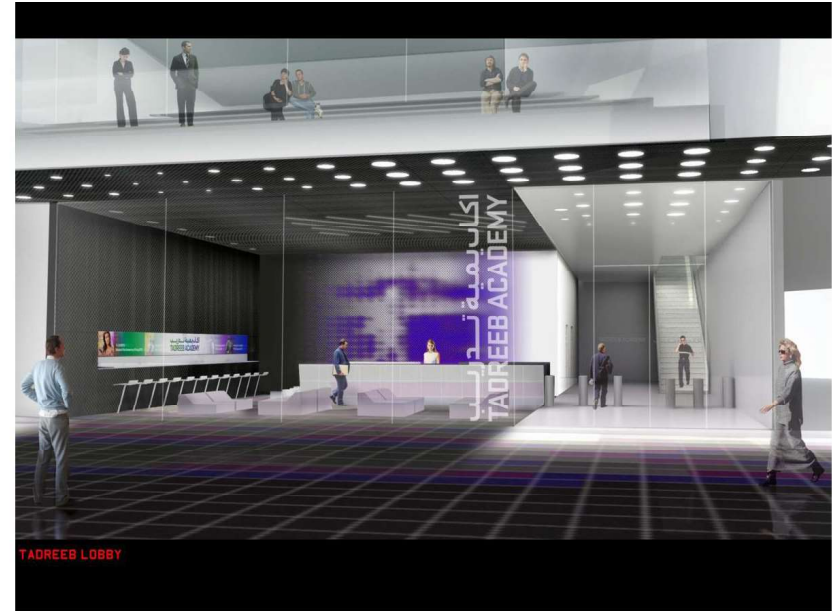
view magnet event space



digital carpet details



TVOFOUR54 LOBBY



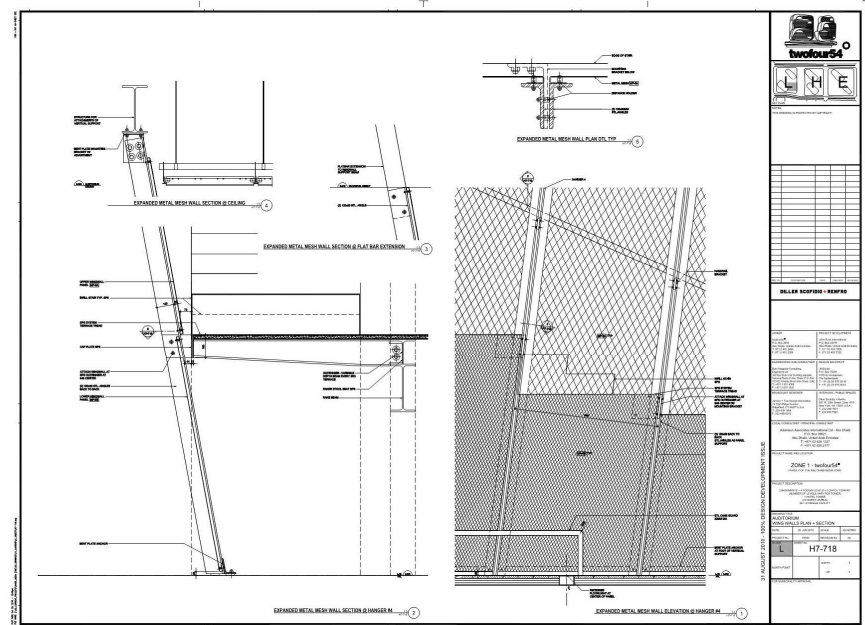
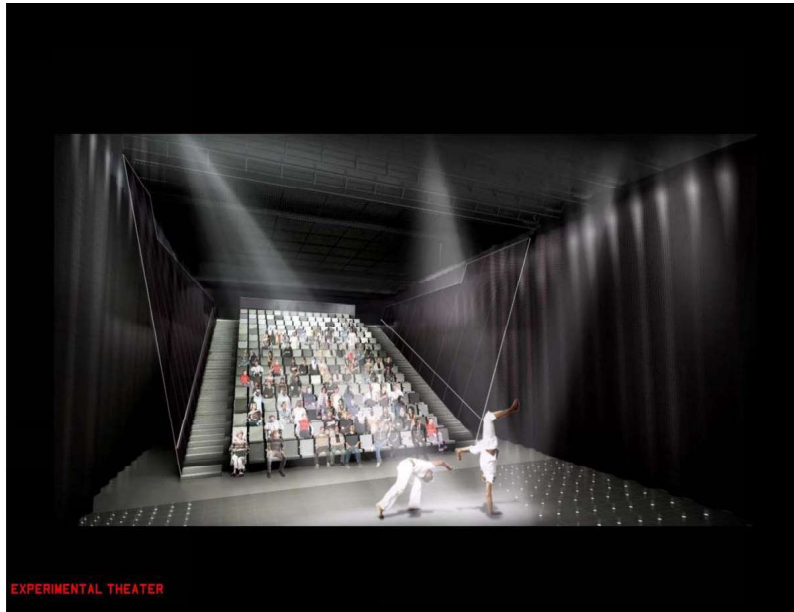
TADREEB LOBBY



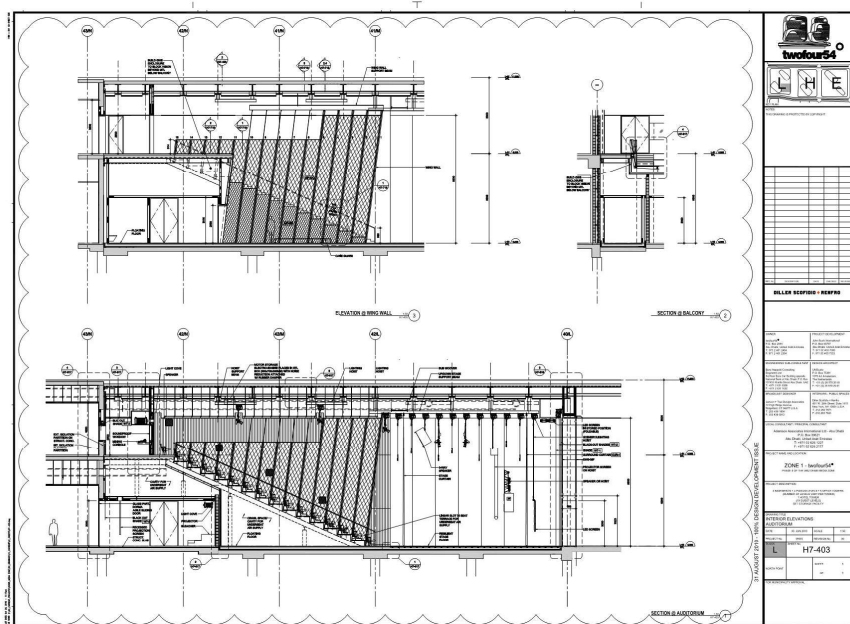
MEDIA RESOURCE CENTER



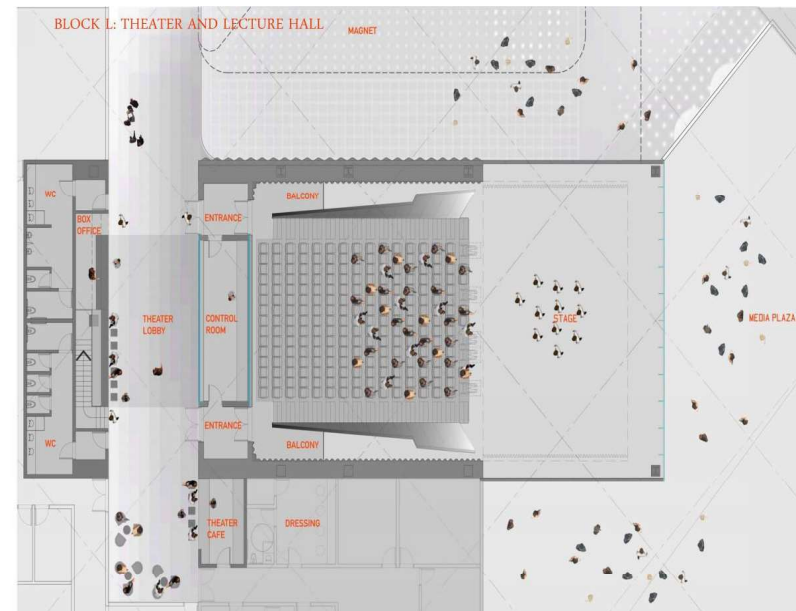
TEMPORARY EXHIBITION / BOOKSTORE



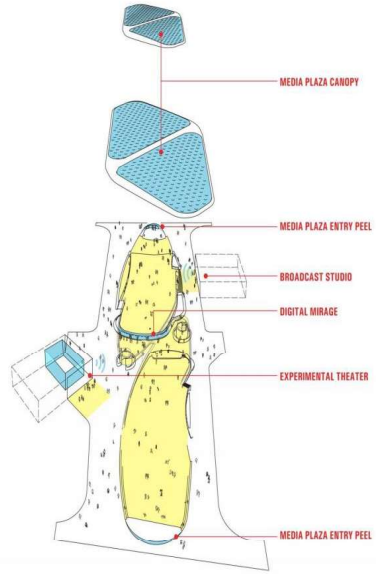
magnet theater details



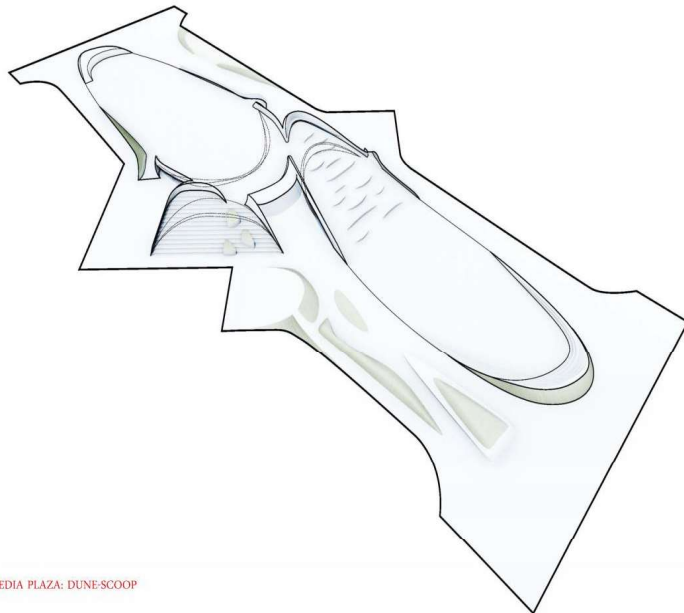
magnet theater section and elevation



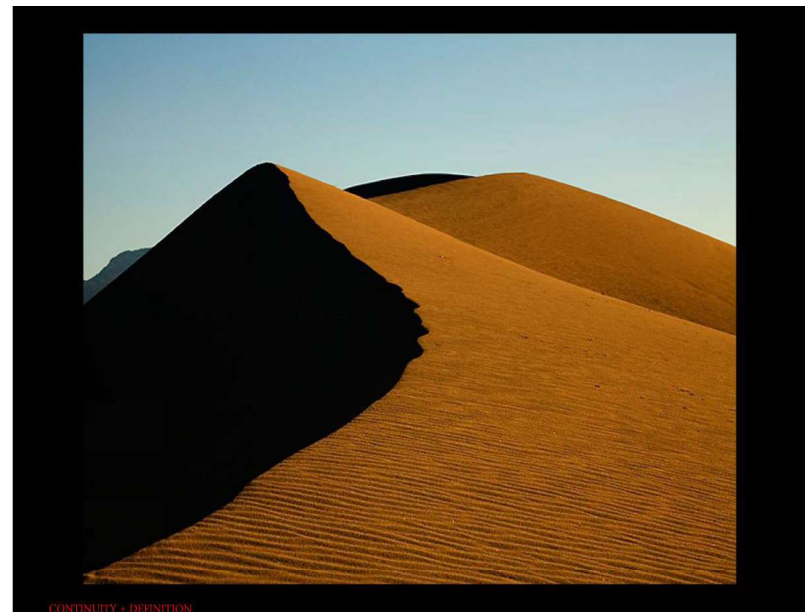
MEDIA PLAZA



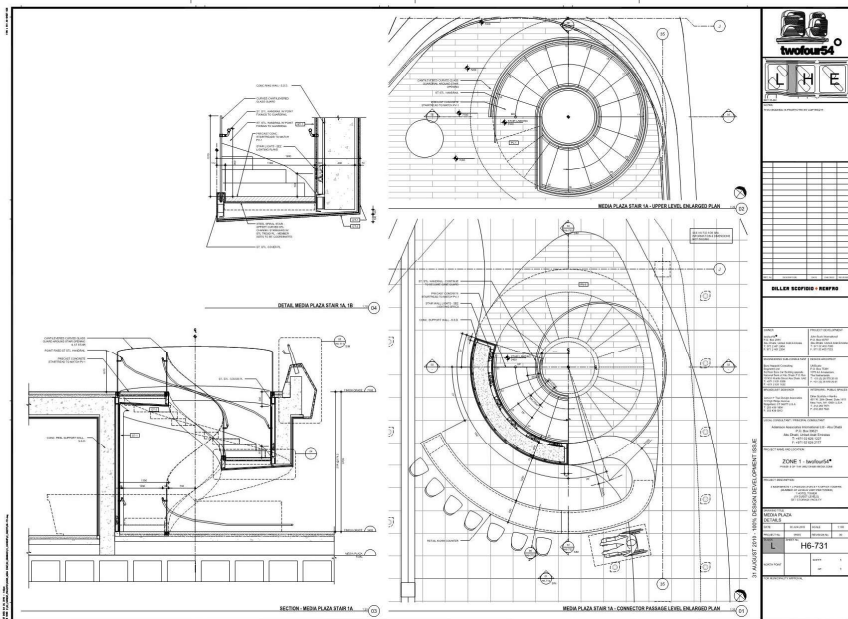
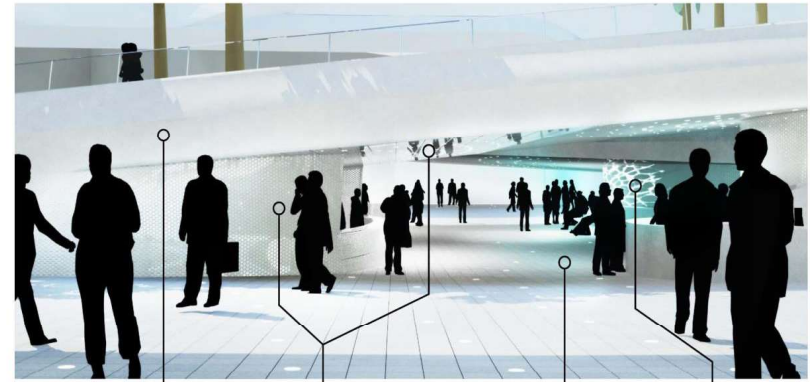
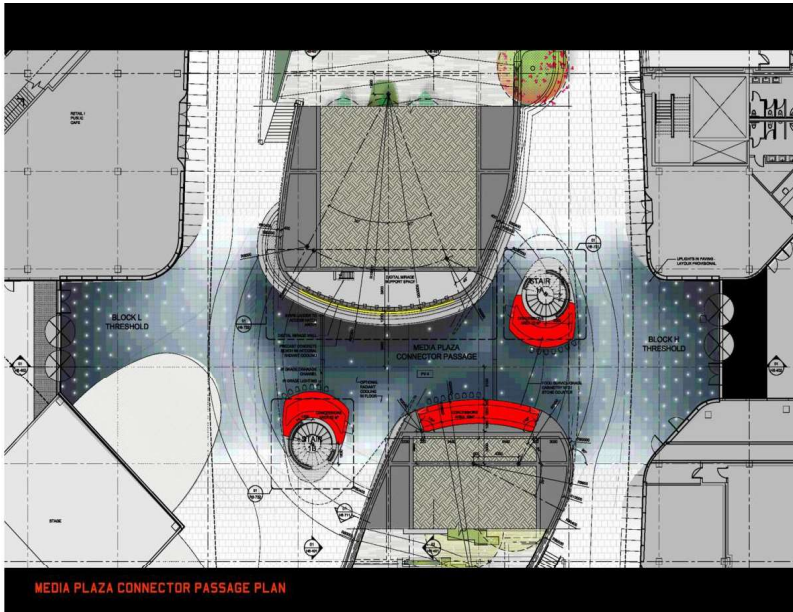
MEDIA PLAZA: DUNE-SCOOP



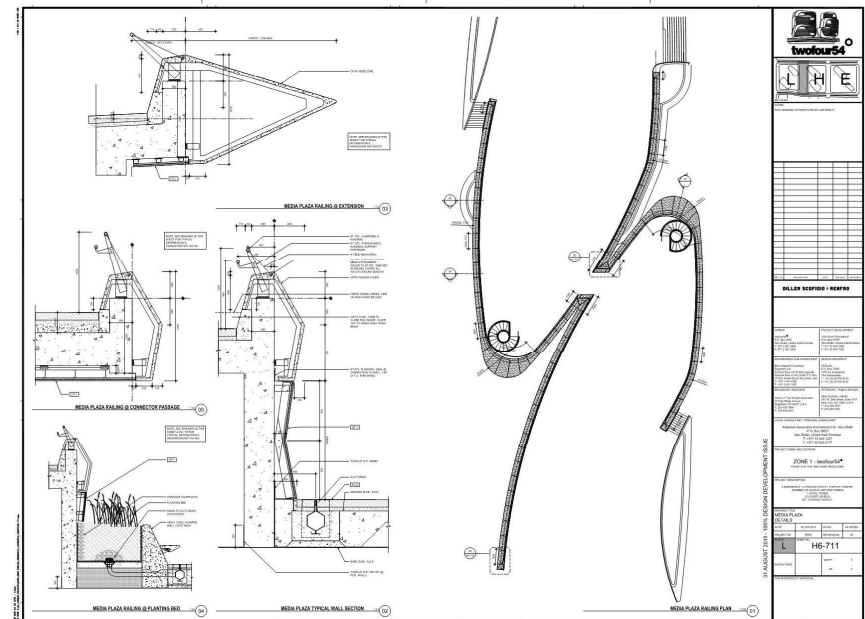
MEDIA PLAZA PLANTING



CONTINUITY + DEFINITION
concept image



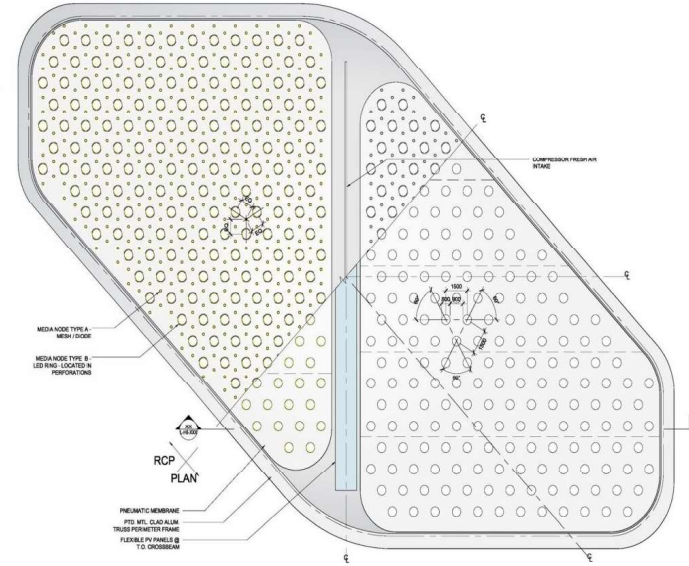
media plaza stair/bar



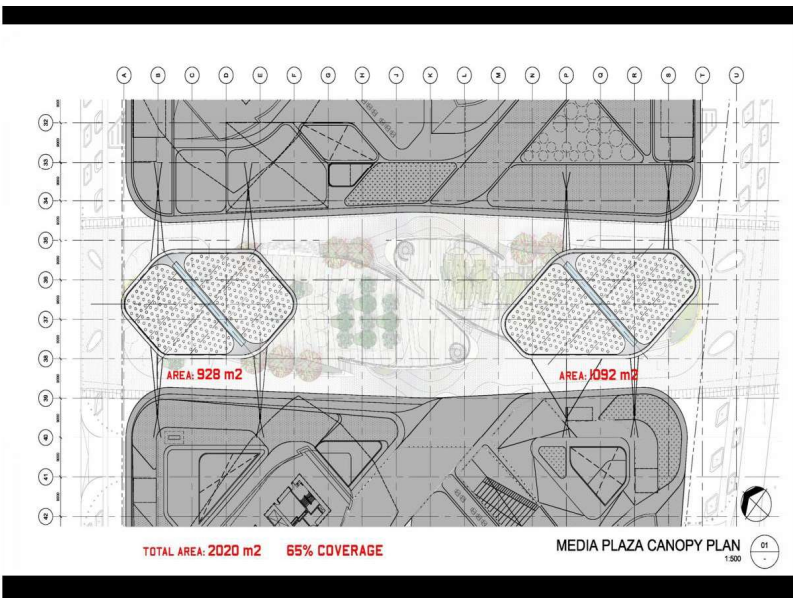
media plaza details



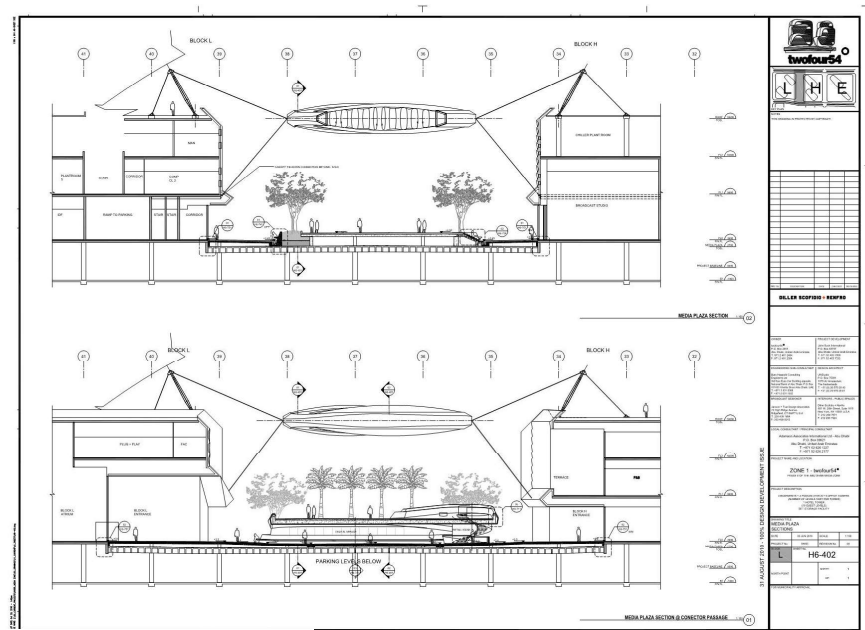
media plaza canopy



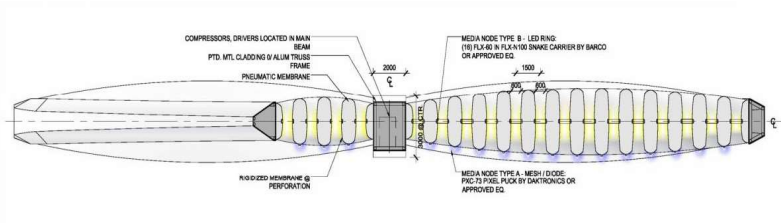
canopy detail plan



canopy plan



canopy section



canopy details section

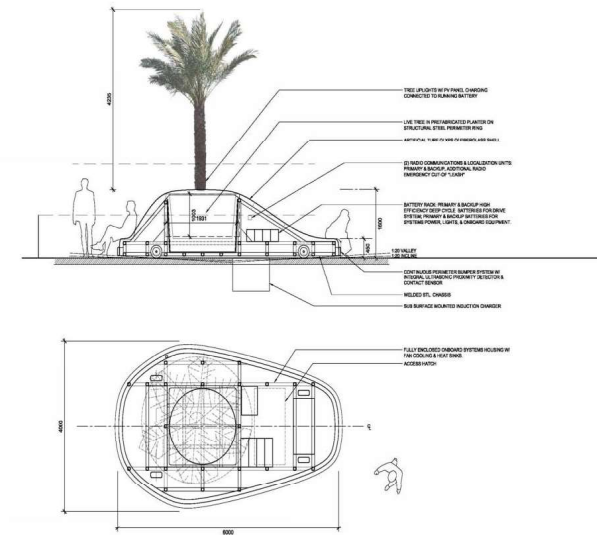


MOBILE TREES

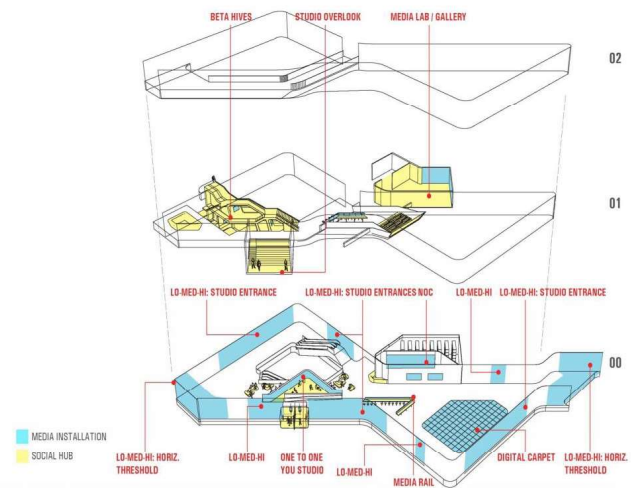
mobile palm trees



material precedent



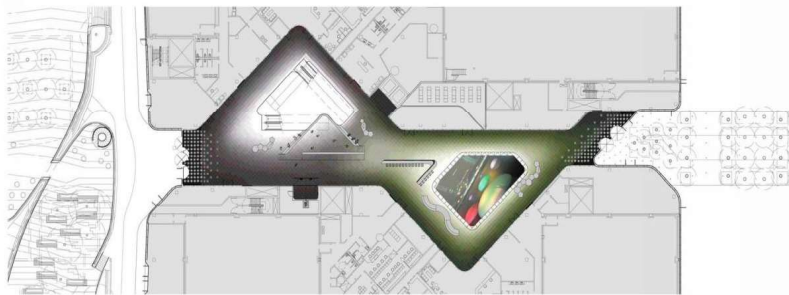
MOBILE TREES



lot b media atria



beta hives

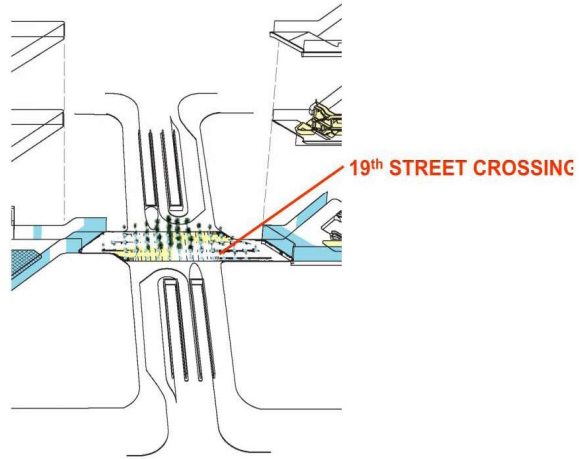


LOT B
lot b media atria plan and section

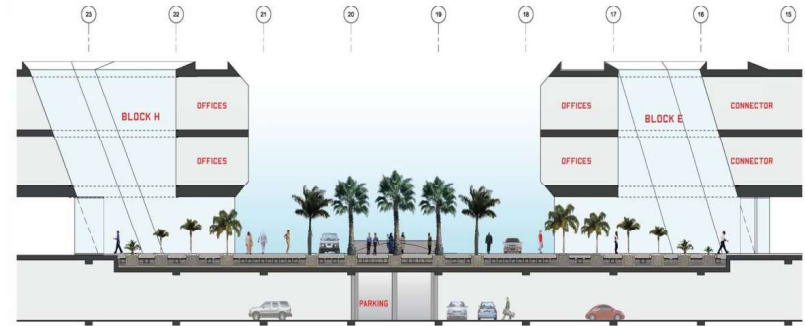


digital carpet

19TH STREET CROSSING



19TH STREET CROSSING: LIGHTING INSTALLATION

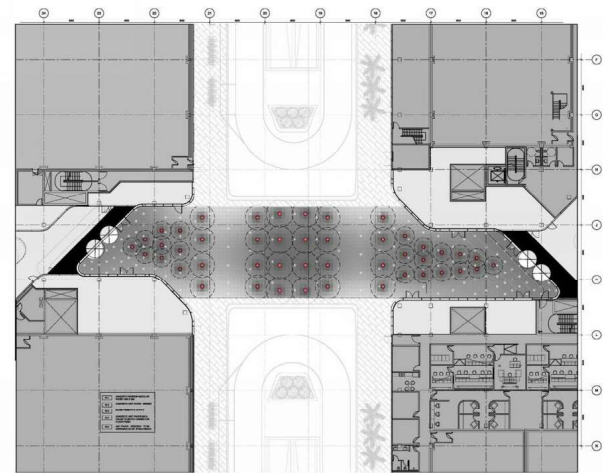


*19th Street Crossing is an installation of addressable LED uplights, each tree is lit from below and spatial color effects are produced by changing light color and intensity.



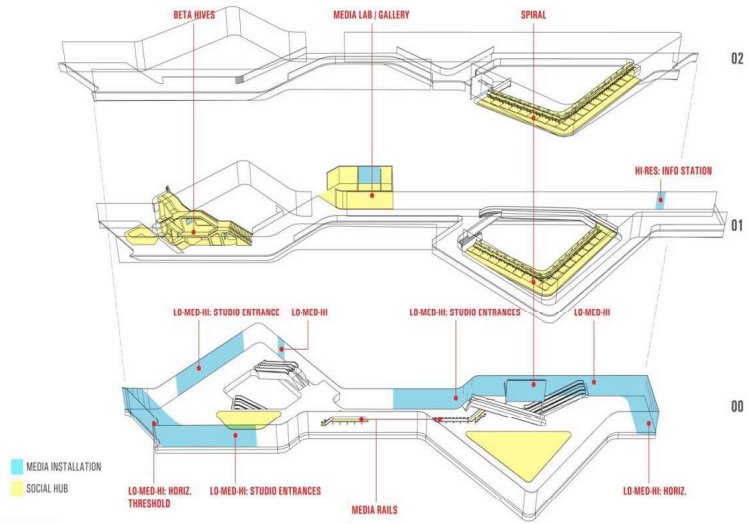
19TH STREET CROSSING MATERIALS

19th street crossing

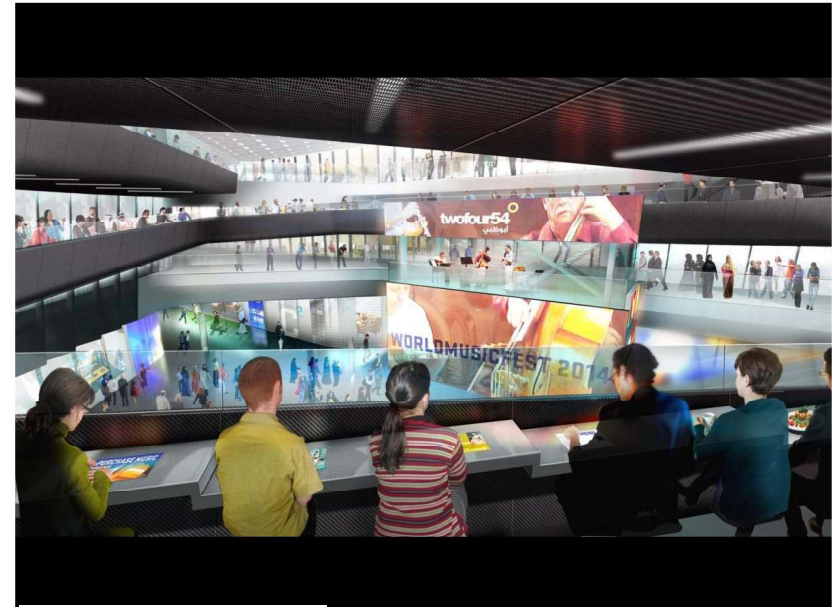


19TH STREET CROSSING PAVING

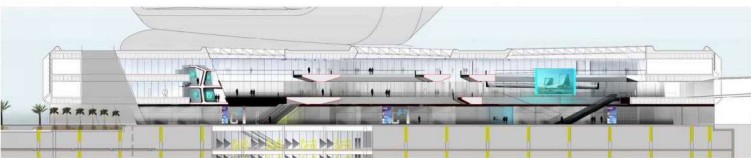
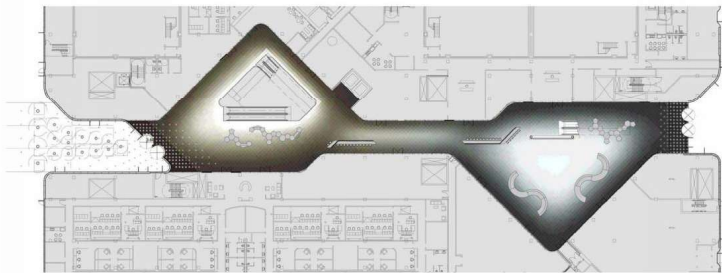
BLOCK E



lot c media atria

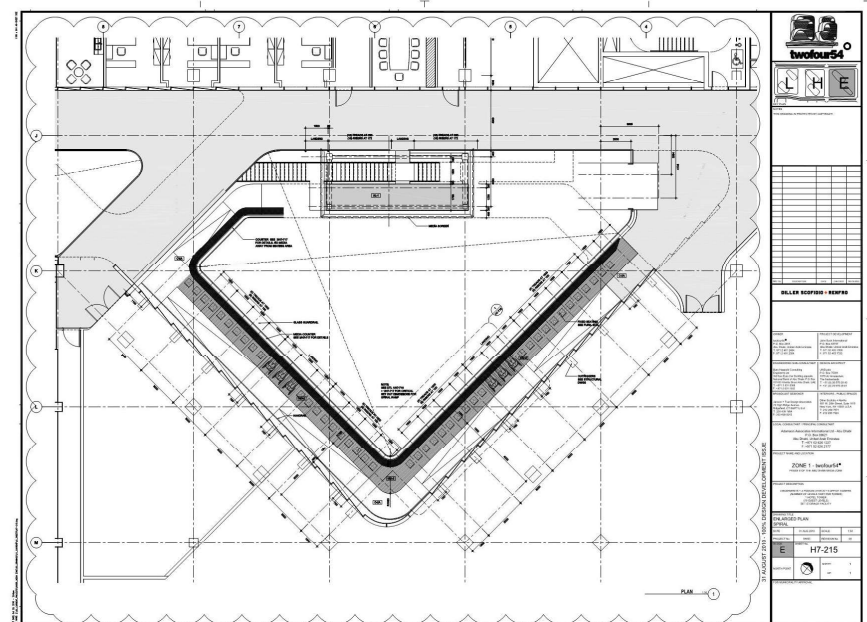


view from ramp

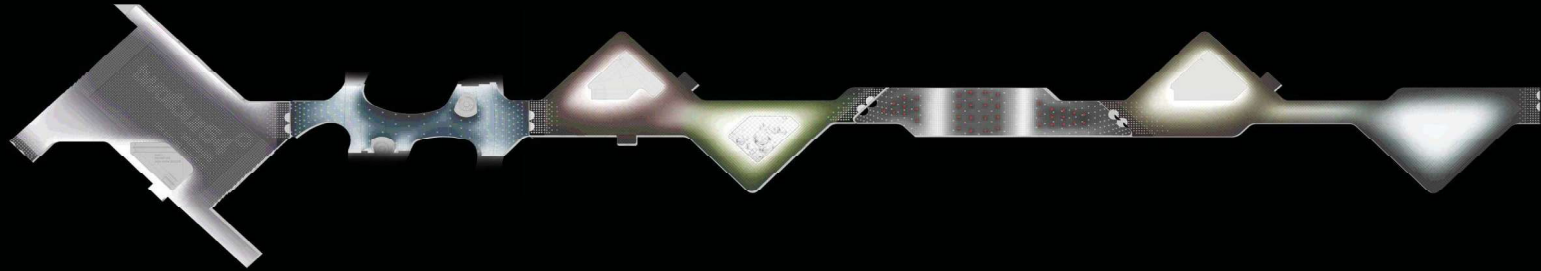


LOT C

lot c media atria plan and section



ramp plan



BLOCK L



MEDIA PLAZA



BLOCK HI



BLOCK H2



BLOCK E1



BLOCK E2



Key Plan

twofour54

CONNECTOR

PAVING COLOR SCHEMES

DILLER SCOFIDIO + RENFRO

INTERIOR OFFICE VIEW 01

WRITABLE GLASS SURFACES 05

BREAKOUT/PATIO FURNITURE 02 03 04 06 07

USM HALLER - SENIOR OFFICE CONFIGURATION 01

USM HALLER - MANAGER OFFICE CONFIGURATION 02

USM HALLER - OPEN PLAN CONFIGURATION 03

01 GL-1A, BENE OFFICE PARTITIONS 02 GL-1C, BACK-PAINTED WHITE GLASS PARTITION (CARVART) 03 GL-1B, BACK-PAINTED DARK GREY GLASS PARTITION (CARVART) 04 GL-1D, GLASS PARTITION (PILKINGTON GREY TINT) 05 USM HALLER FURNITURE SYSTEM 06 B98 ITALIA, TUFTY TIME 07 QUINZE & MILAN, INFINITY 08 MODI CONTAINER TABLE AND STOOLS

Block L MAGNET

OFFICES

Key Plan

DILLER SCOFIDIO + RENFRO

TOILET ROOM VIEW 01 02 03 04 05

ELEVATION A 07 08

ELEVATION B 06 07 08

01 STALL/CEILING AND ENTRY DOOR PAINT COLOR 02 CERAMIC WALL HUNG TOILET (DURAVIT, STARCK X) 03 CERAMIC SINK (DURAVIT, VERO), STAINLESS STEEL MIXER (VOLTA) 04 SOAP DISPENSER (VOLTA) 05 PAPER TOWEL DISPENSER/WASTE (BOBRICK) 06 CT-14, CERAMIC MOSAIC PENNYROUND TILE (NEMO TILE COMPANY) 07 CT-12, STAINLESS STEEL PENNYROUND TILE, MATTE (NEMO TILE COMPANY, RAZOR) 08 CT-13, STAINLESS STEEL PENNYROUND TILE, MIRRORRED (NEMO TILE COMPANY, RAZOR)

Block L MAGNET

TOILET ROOMS

Key Plan

DILLER SCOFIDIO + RENFRO

PRAYER ROOM PLAN 01 02 03

ELEVATION A 01 02

ELEVATION B 01 02

01 WD-4, MAPLE WOOD PLANK FLOOR, WHITE STAIN 02 CT-2, CERAMIC TILE FLOOR, COLOR: ROVERE BIANCO (LEA CERAMICA, BIODISENZE) 03 CPT CARPET TILE RUG

Block L MAGNET

PRAYER ROOMS

Key Plan

DILLER SCOFIDIO + RENFRO

MEDIA PLAZA - ENTRY FROM SOUTH LOOKING NORTH WEST 01 02 03 04 05 06

MEDIA PLAZA PLAN WITH PLANT LAYOUT 01 02 03 04 05 06

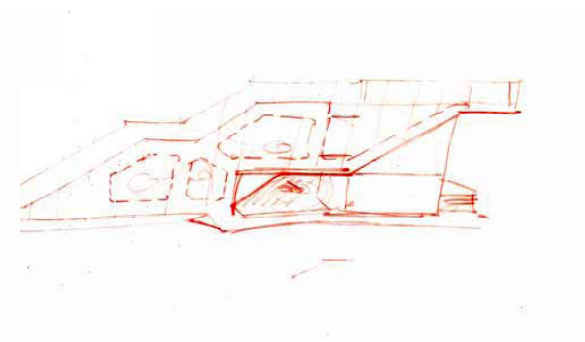
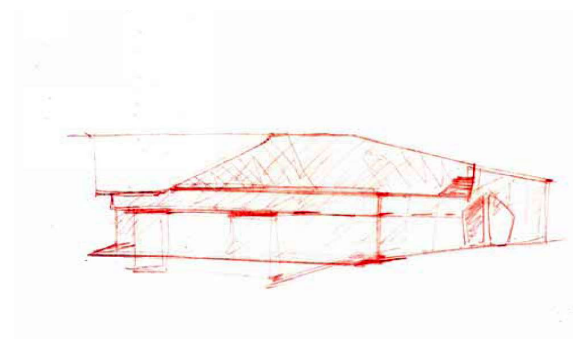
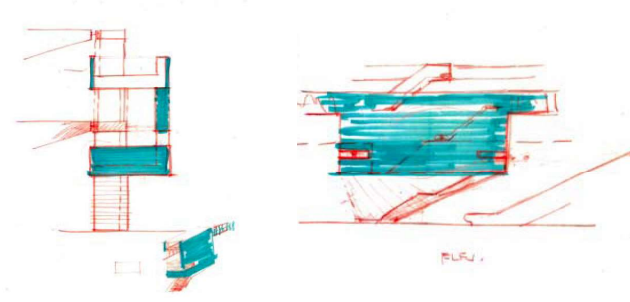
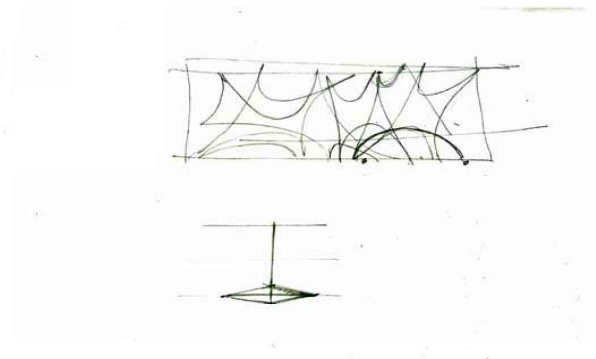
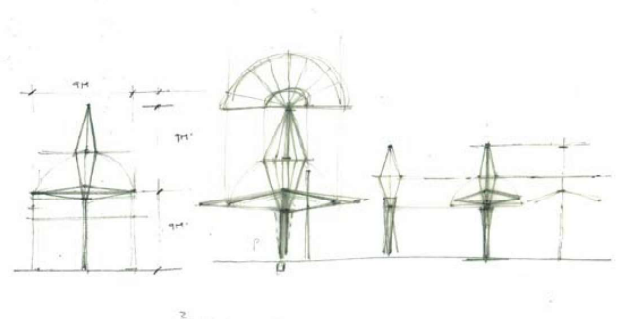
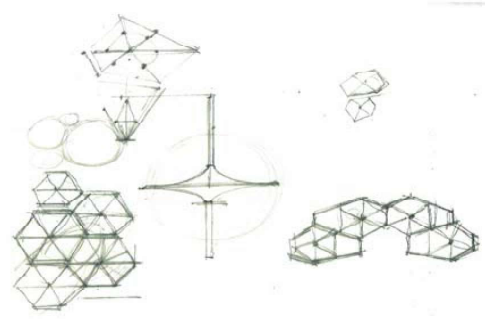
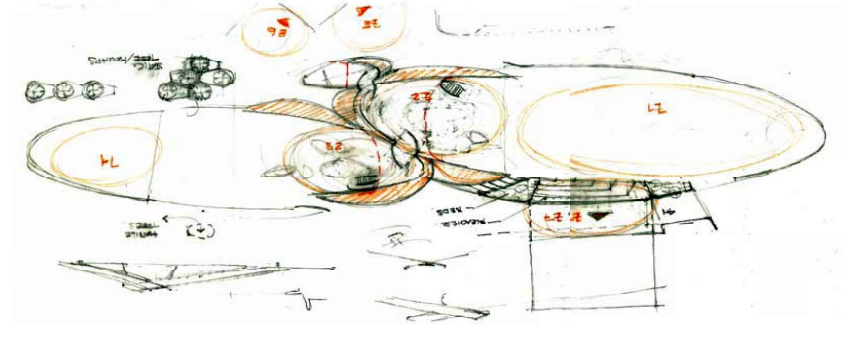
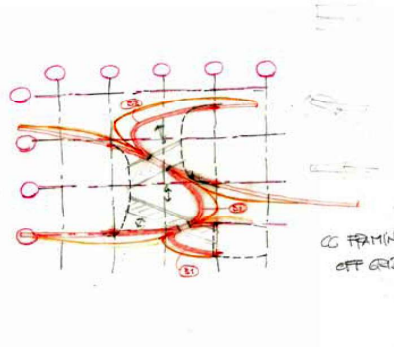
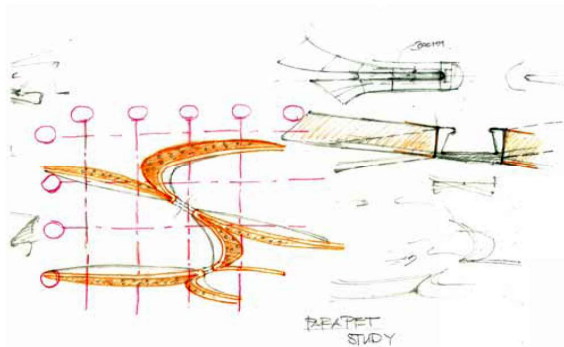
01 CLOUD FABRIC (TENARA) 02 PAINTED ALUMINUM PANEL 03 GT-2, GLASS MOSAIC PENNYROUND TILE, COLOR: GLOSS ODDER (NEMO TILE) 04 DIGITAL MIRAGE DIGITAL CONCRETE SCREEN (DUPONT LIGHTSTONE) 05 PV-1, CONCRETE UNIT PAVER 06 C-2R.2, CONCRETE TILE (SADLER STONE)

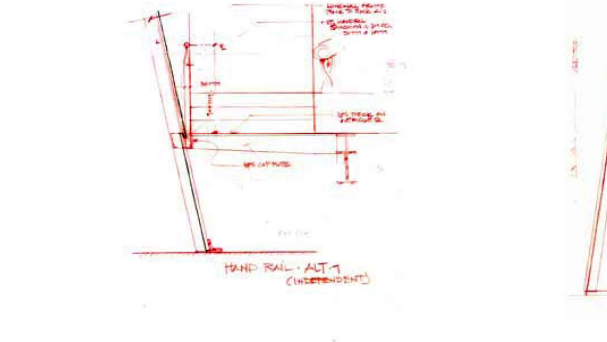
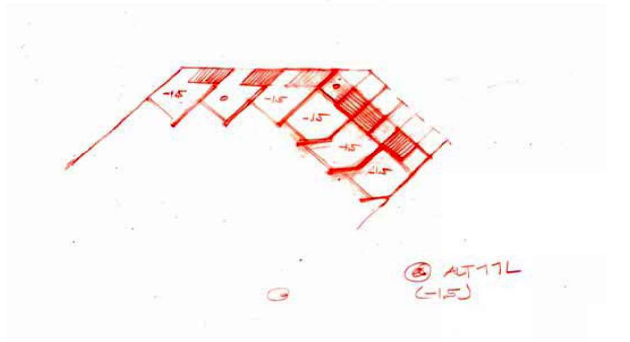
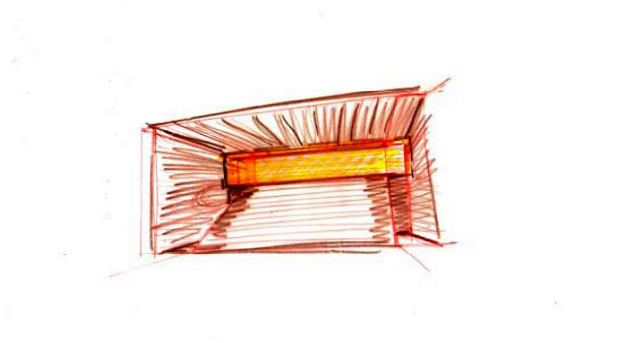
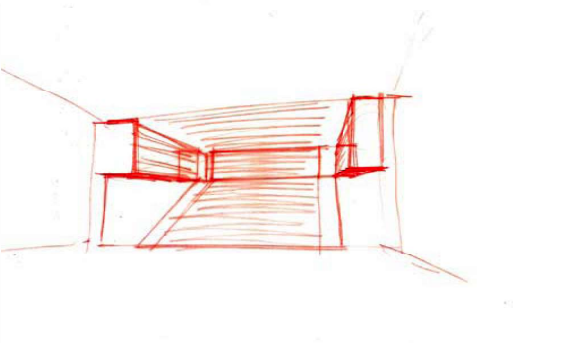
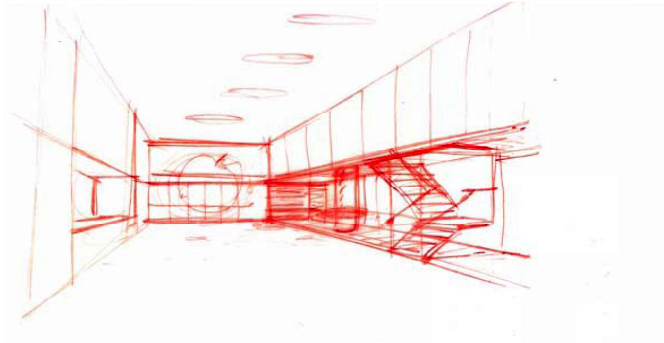
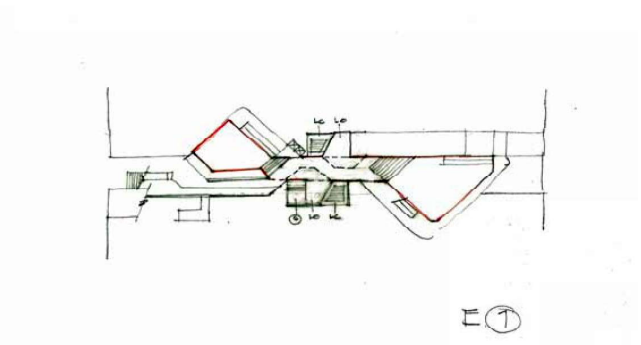
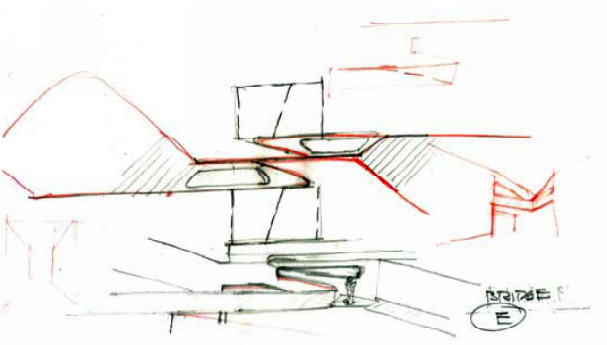
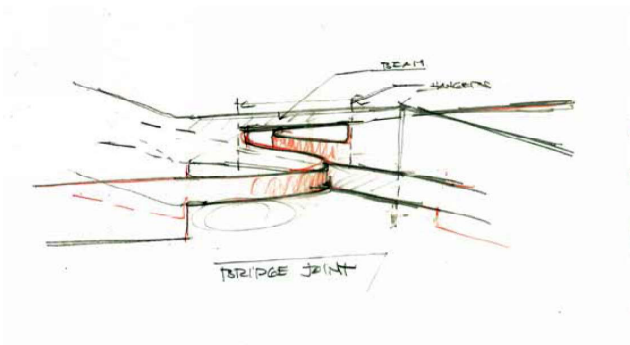
Block L MAGNET

MEDIA PLAZA

Key Plan

DILLER SCOFIDIO + RENFRO





**Brown University Creative Arts Center, Providence, R.I.,
Completed, 2009**

The 35,000 sf new building provides facilities for interdisciplinary programs drawing from fine arts, performance arts, new media, liberal arts and the sciences. The facilities consist of production spaces for interdisciplinary project work, wood and electronic shops, recording studio, multimedia lab, private fellow's studios, visiting artist's studios class rooms, seminar rooms, gallery and a 210 person recital hall. The concept for the Creative Arts Center is a sheared loft building where instead of stacked programs each program to have visual contact with 2 other programs in section thereby promoting programmatic transparency and interaction. The major circulation stair landing becomes a vertically stacked living room where social and creative interface is fostered, and creates space for serendipitous or planned encounters.

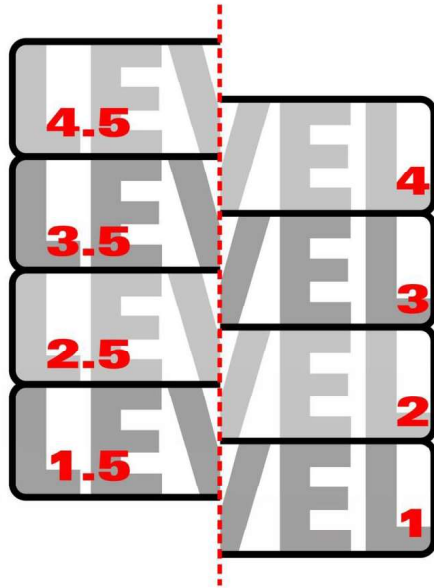


west facade at dusk



longitudinal section looking east

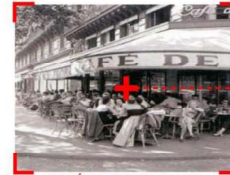
CONCEPT OVERVIEW



CABARET VOLTAIRE, ZURICH

Marcel Janco
Richard Huelsenbeck
Tristan Tzara
Jean Arp
Hugo Ball

• DADA



CAFÉ DE FLORE, PARIS

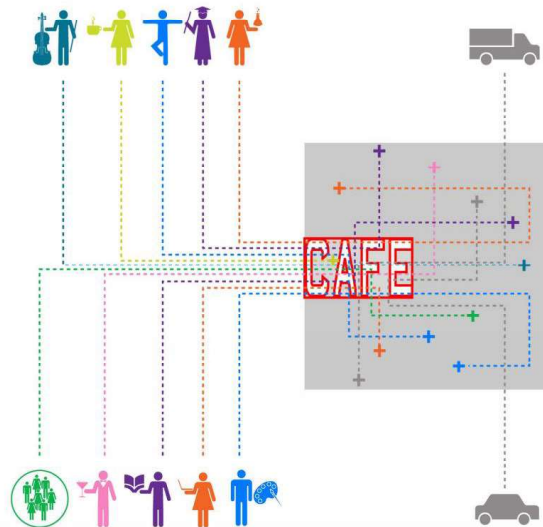
Apollinaire
Louis Aragon
André Breton
Paul Éluard

• SURREALISM

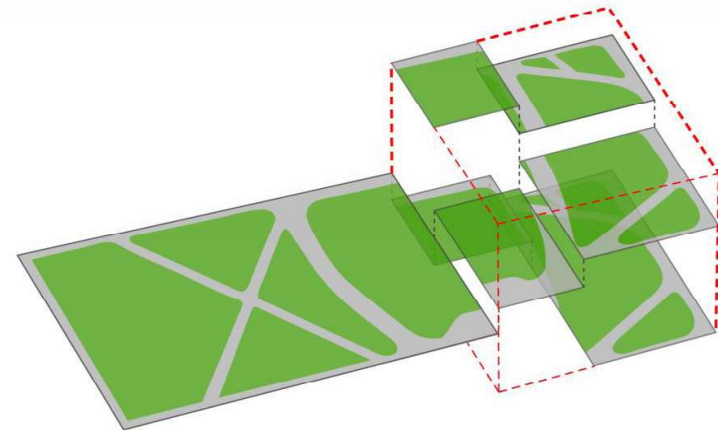


Jean-Paul Sartre
Simone de Beauvoir
Ernest Hemmingway
Pablo Picasso

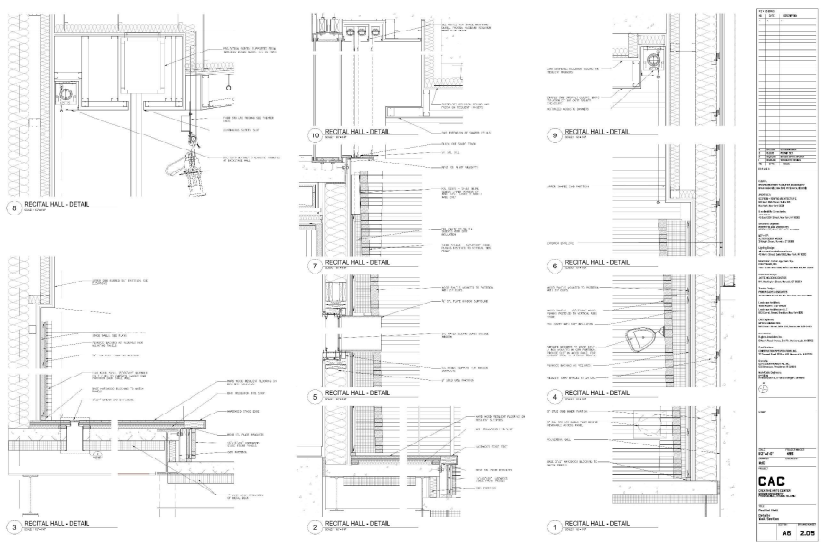
• EXISTENTIALISM



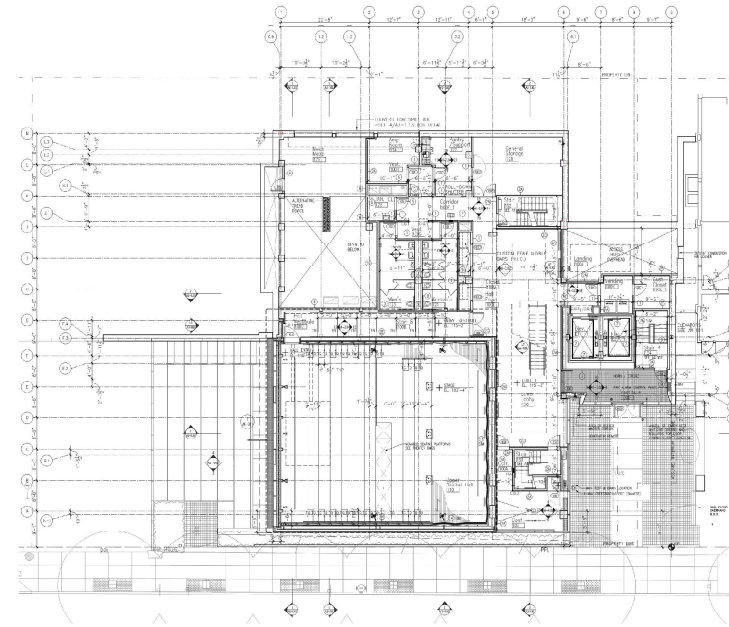
mixing chamber



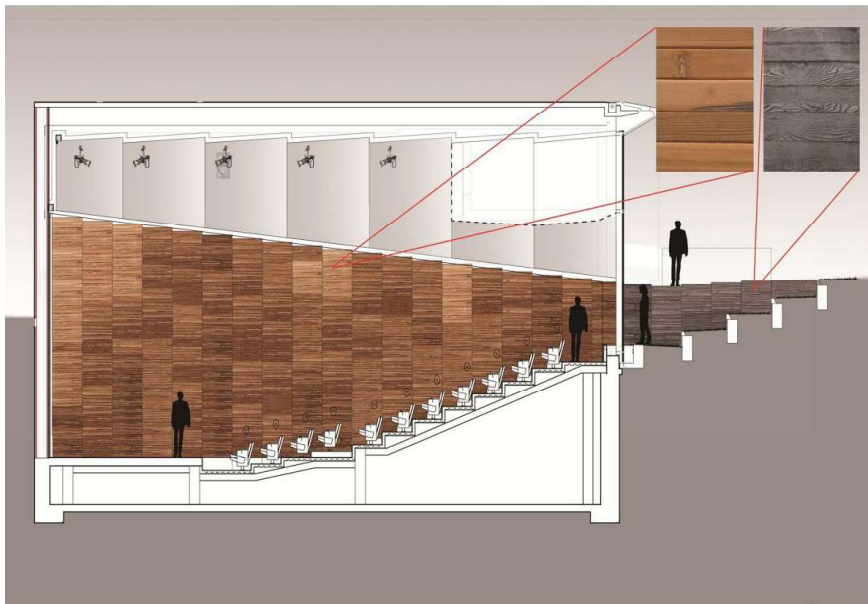
campus green with vertical extension



auditorium wall details



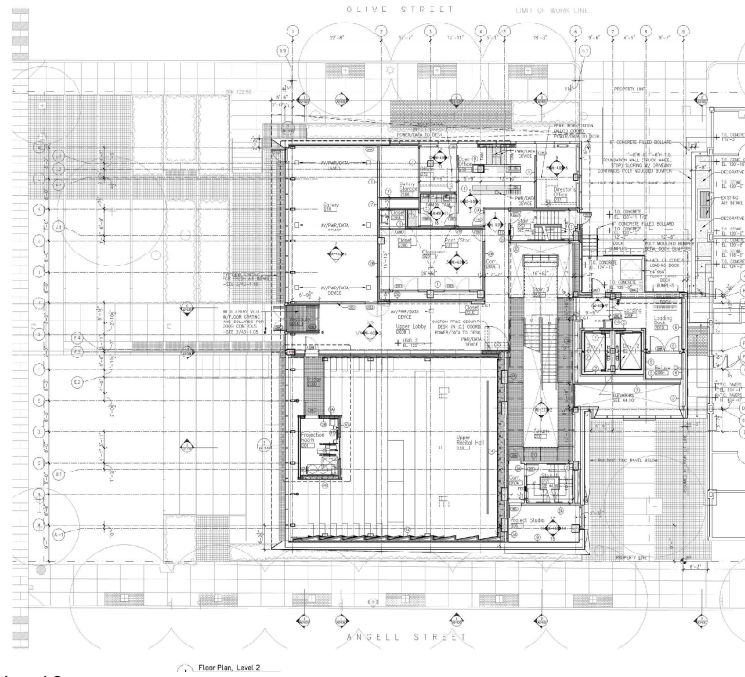
Level 1



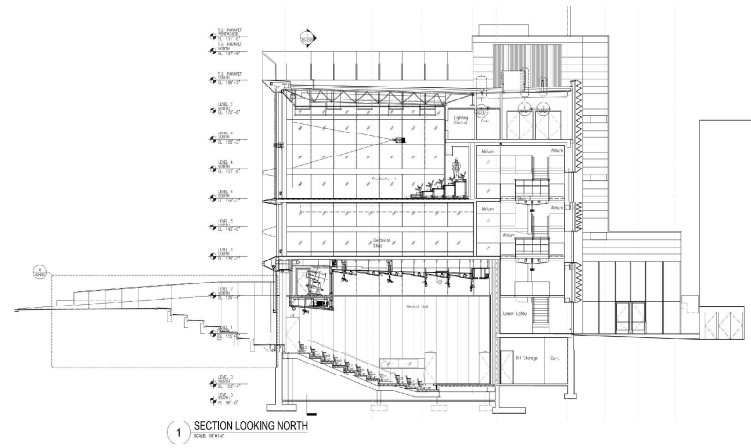
south elevation of auditorium



auditorium looking south



Level 2



longitudinal section



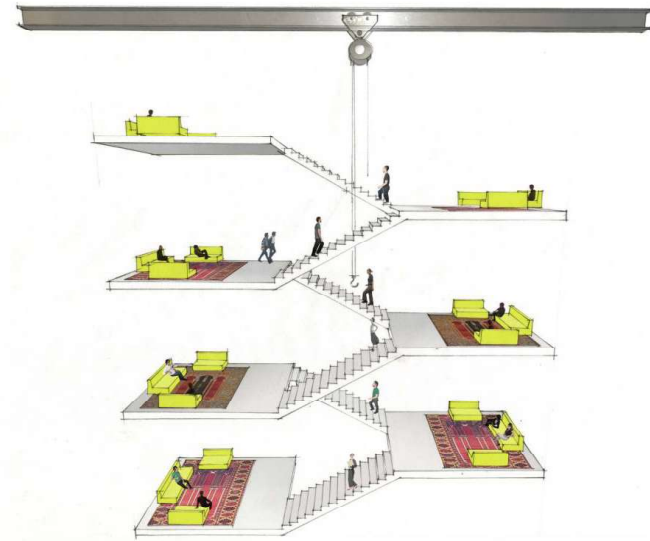
auditorium looking north



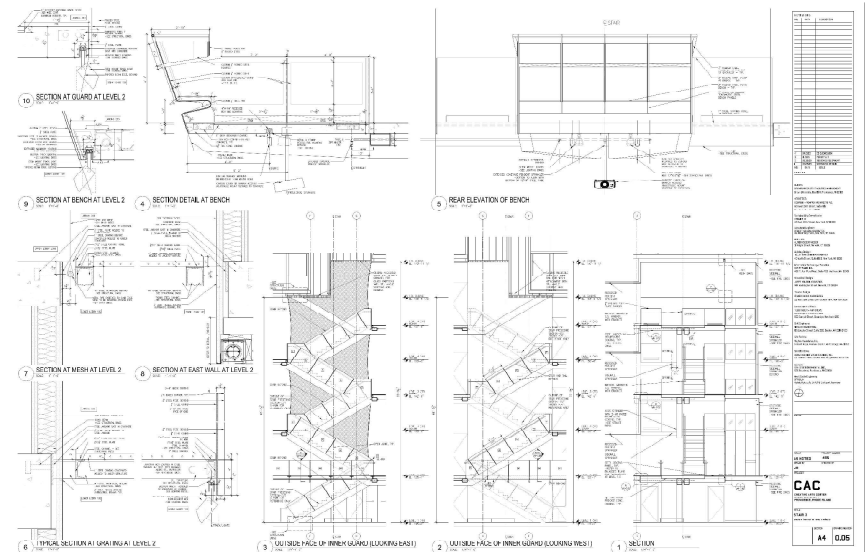


atrium with stacked living rooms

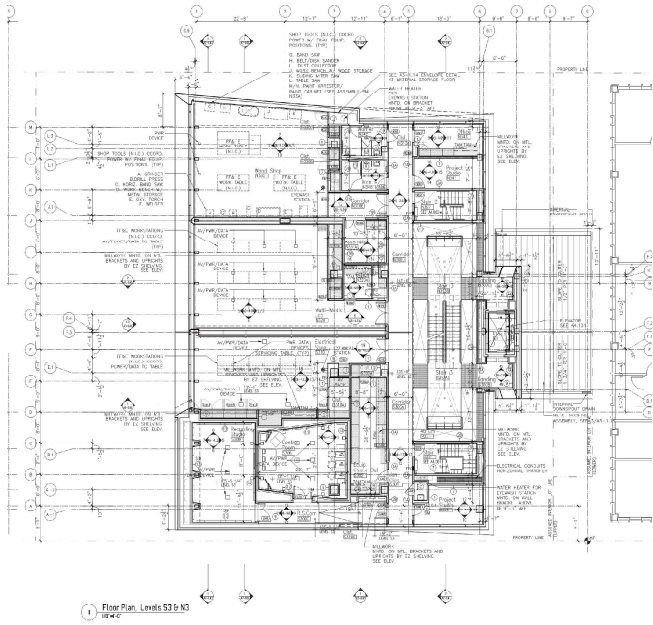
PUBLIC SPACE-living rooms



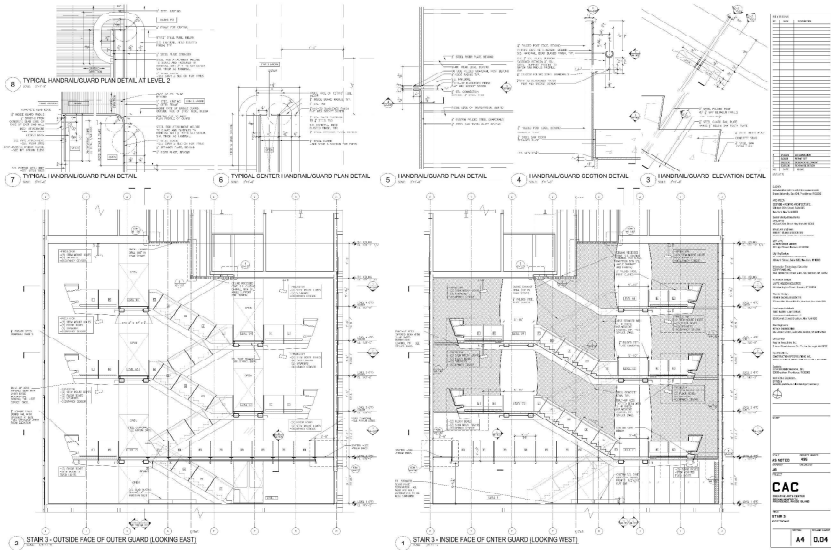
concept image- stair /living rooms



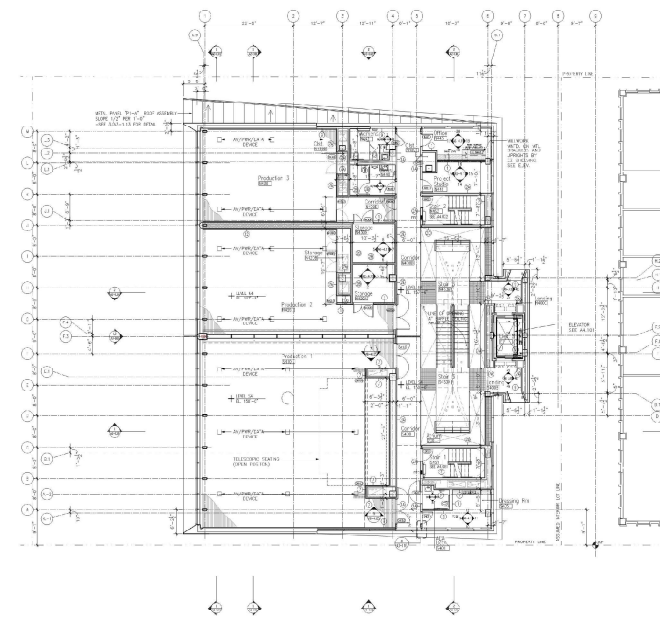
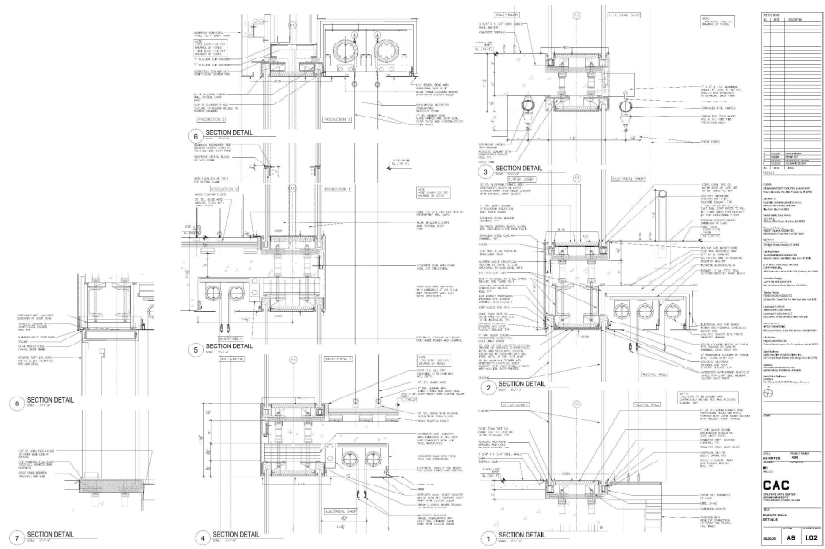
stair/living rooms details



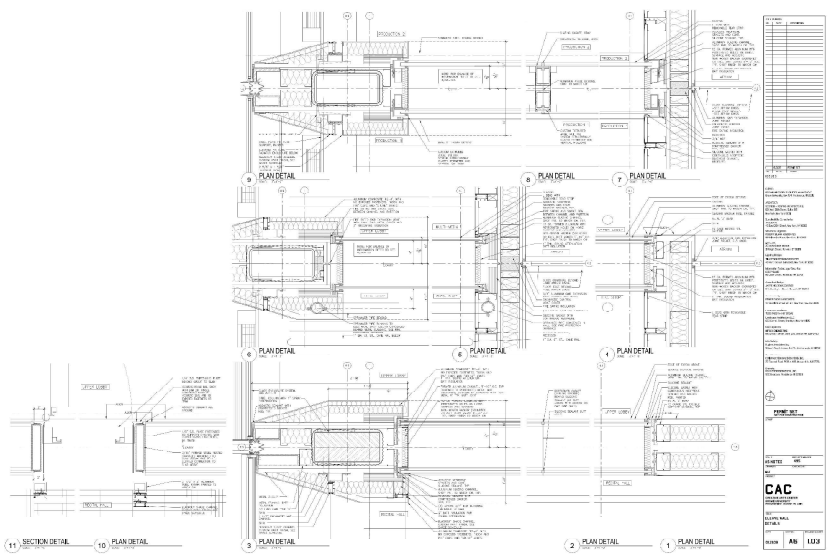
plans S3-N3



living room



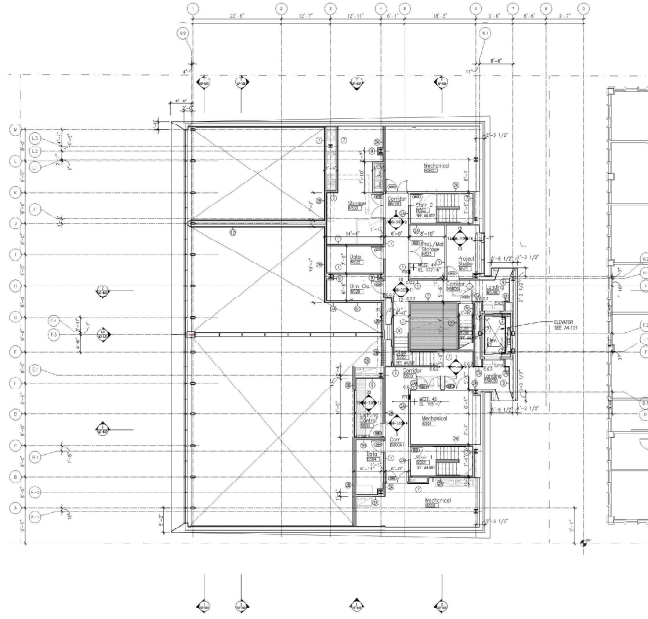
plans S4-N4



cleave wall details
 INSTRUCTIONAL/STUDIO SPACE



production space 1 looking west

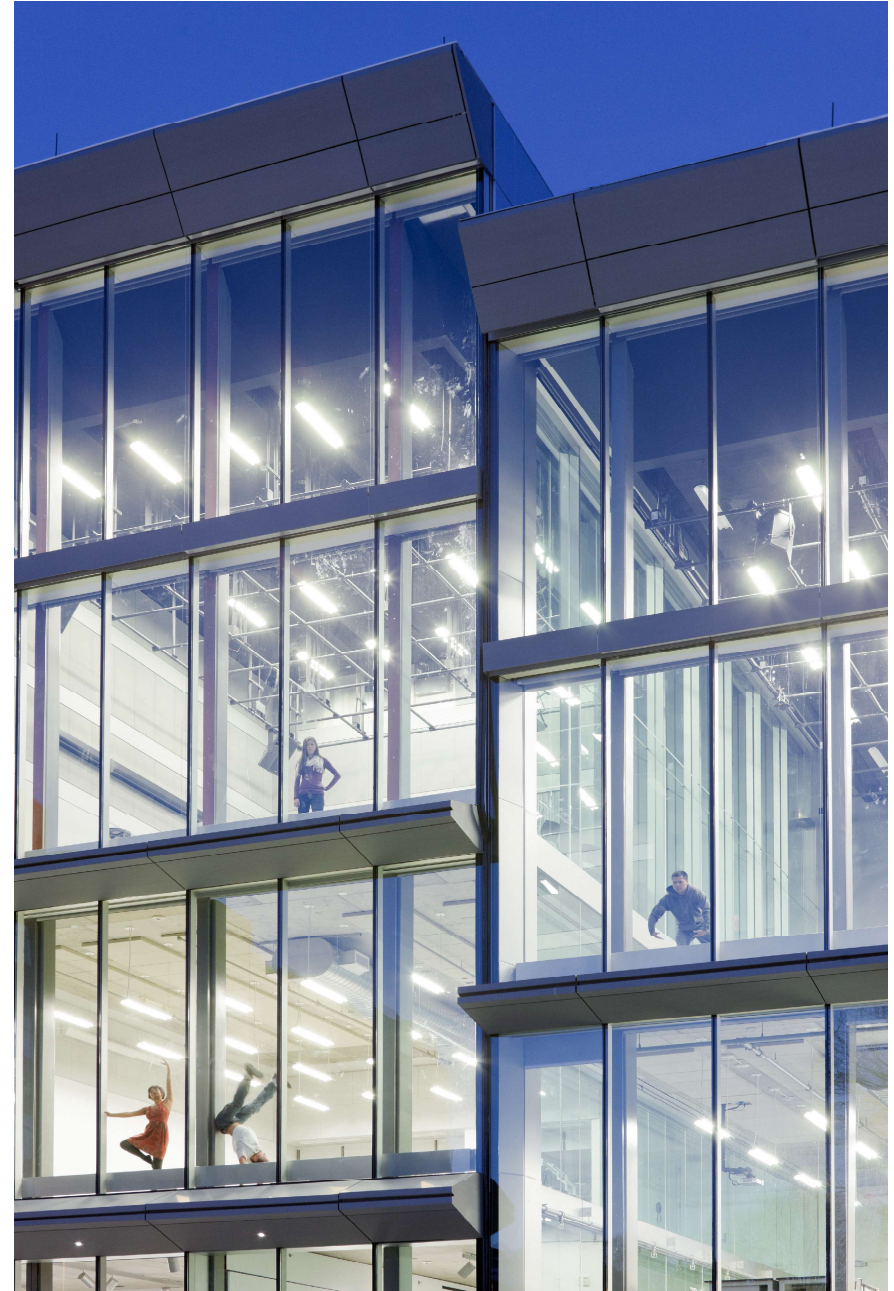


plans S5-N5

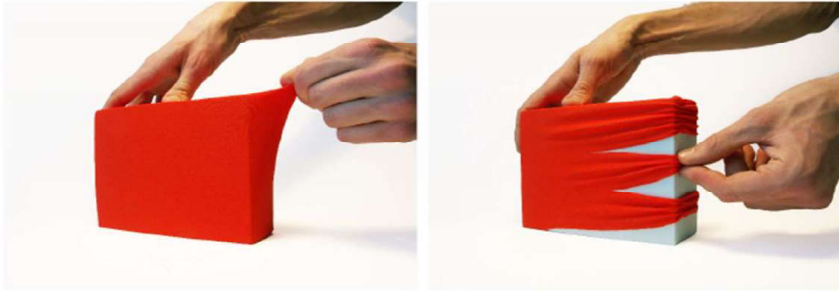
Filter Plan 1 south CC/GHK



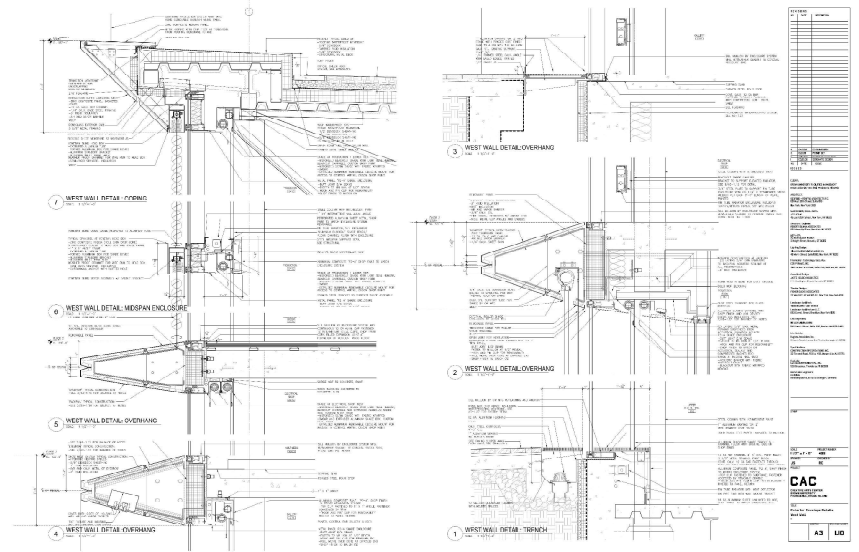
production space 1 looking north



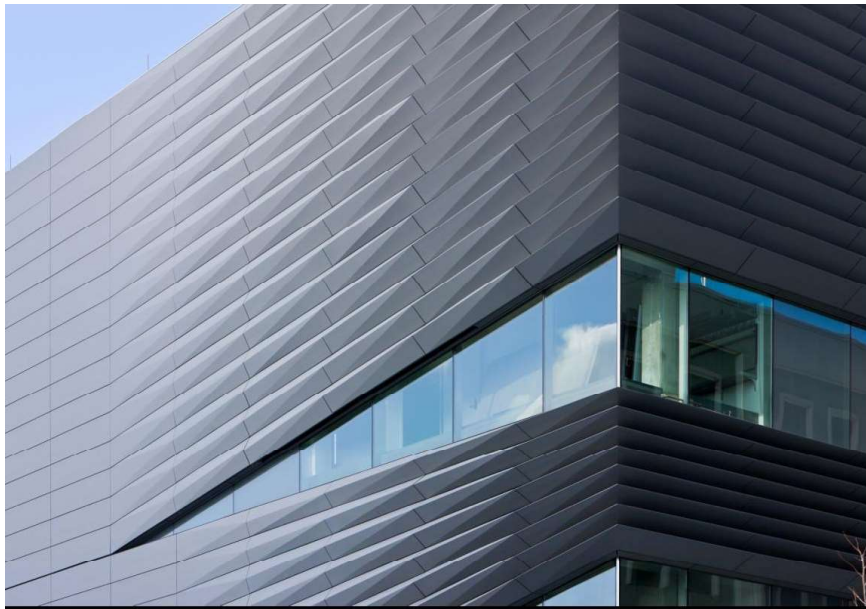
cleave wall through west facade



concept-



exterior wall details

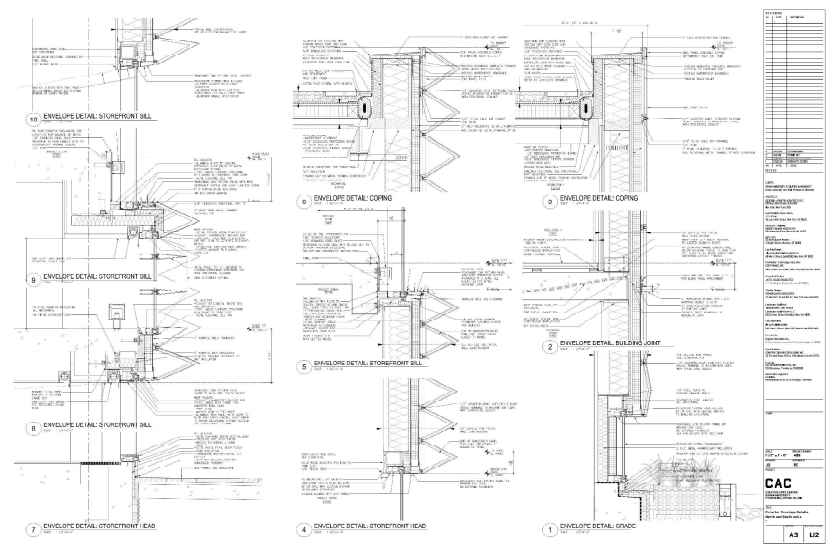
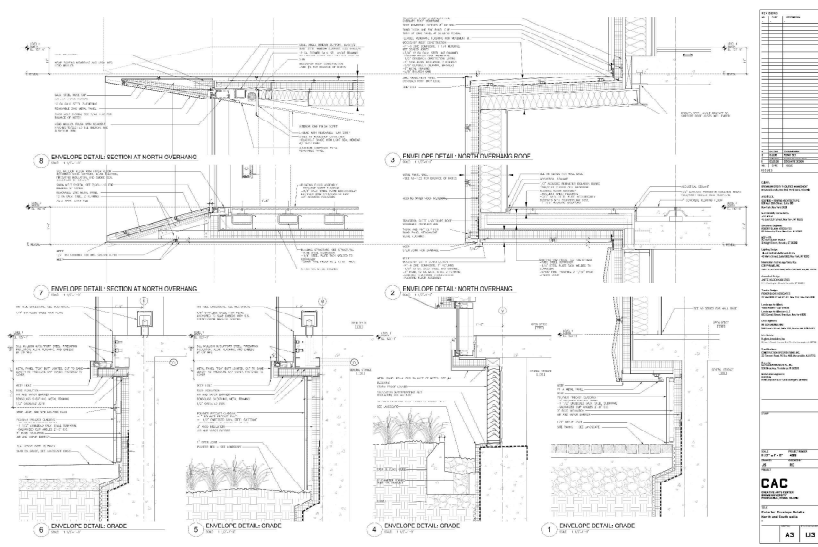


detail corner



south facade

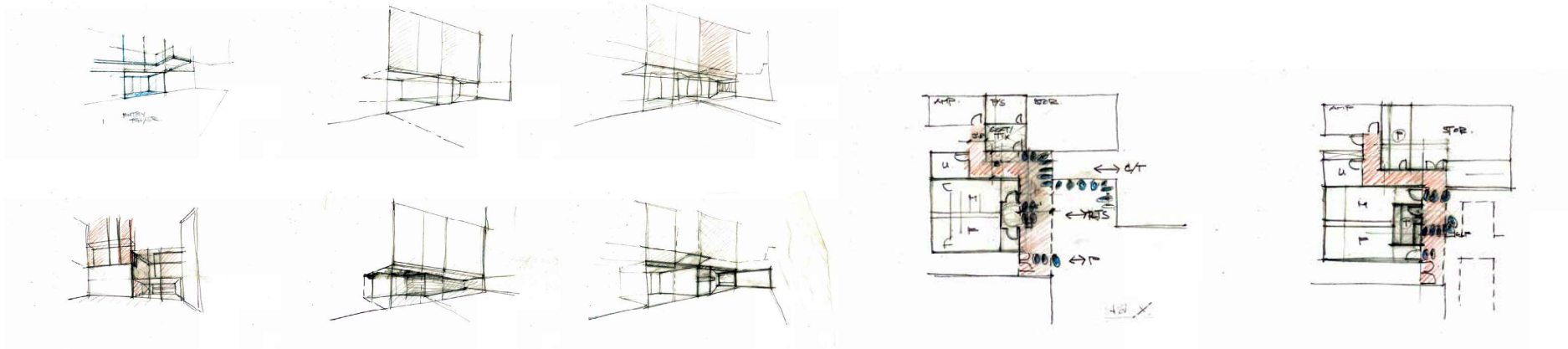
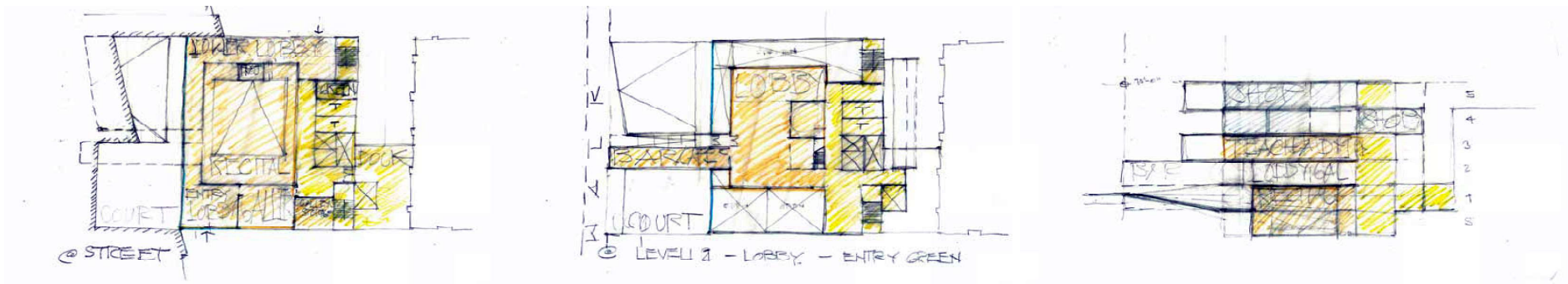
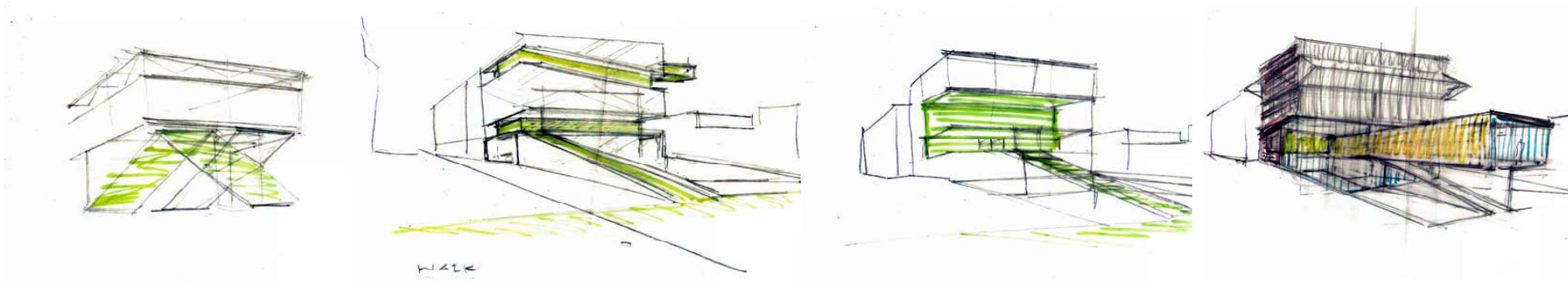
FACADE CONCEPT



view from north west corner



view from southwest corner



brown -sample development sketches

