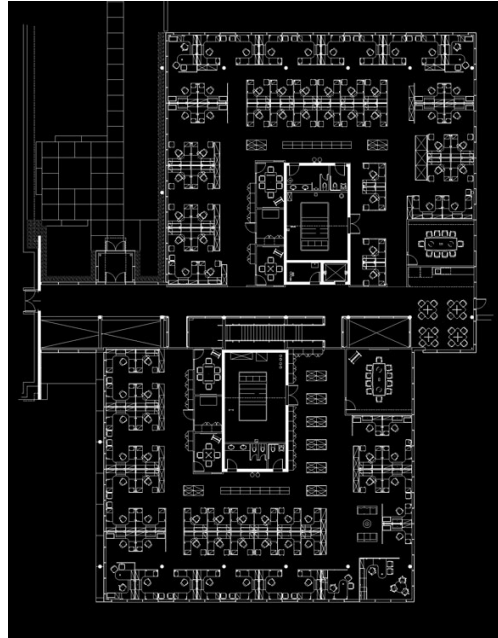


DEC Office Building Expansion, New Paltz, NY, 2002

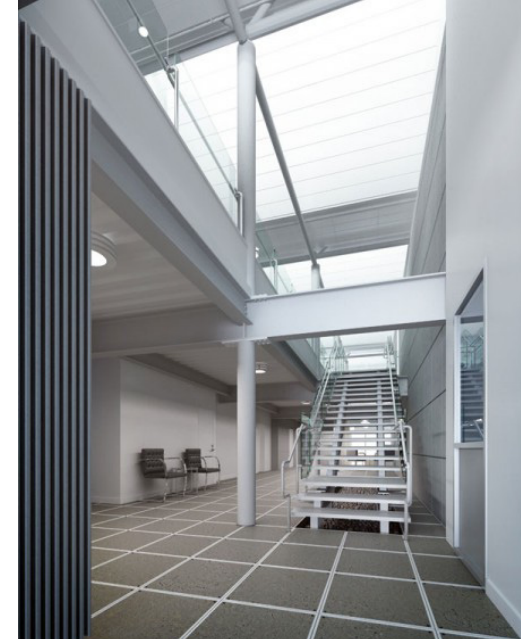
The 30,000 sf addition provides a regional hub for the state agency which administers environmental regulations. The new facility was the first "green" building sponsored by New York State and achieved a LEED Gold rating. The building makes extensive use of daylighting and direct solar gain with automated shading integrated with lighting controls. Materials are renewable, locally produced and make extensive use of recycled content. A pressurized raised floor and modular partition system accommodate future program changes with flexible power, data and HVAC distribution while eliminating most ductwork.



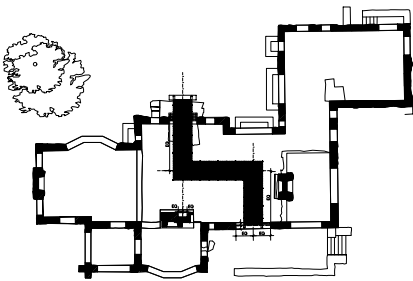
dec-model/site plan



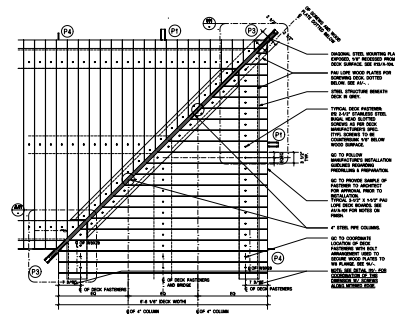
dec-upper entry plan



dec-interior



rye bridge-plan



rye bridge-corner detail

Rye Nature Center-Phase 1- Entrance Bridge - 2001

The bridge provides a new entry sequence to the Rye Nature Center while spanning the ruins of the original estate. The bridge design incorporates interpretive materials that recall the original house, and its former inhabitants. In addition, it utilizes a solar powered low voltage lighting system integrated into the handrail.

South Hampton Residence, New York, 2002

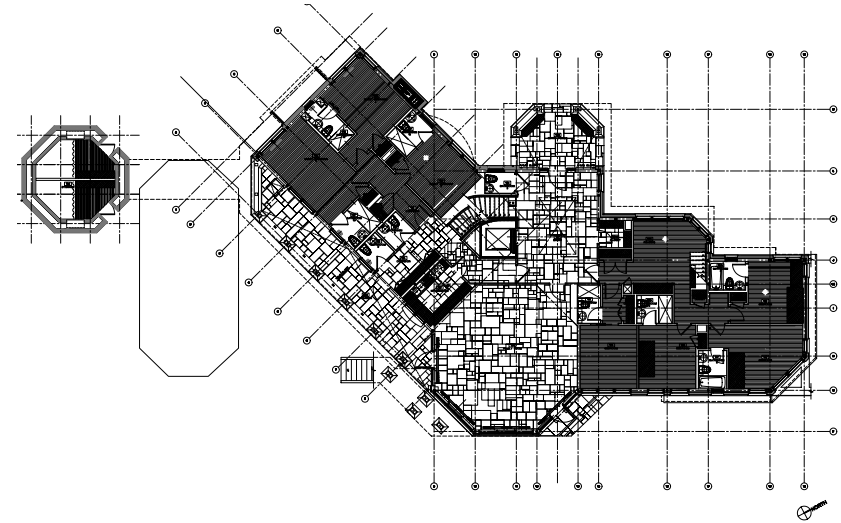
The 14,000 sf summer residence sits on an environmentally sensitive ocean front site between the Atlantic Ocean and a salt water pond in Southampton. What began as a renovation of a 1980s Shingle Style house, evolved into a complete reconstruction from the foundation up. This house features eight bedrooms, fourteen baths, a swimming pool, tennis courts, a gym, a private film screening room, and guest quarters.



south hampton-master bedroom suite with view to ocean



south hampton- elevation



south hampton- plan