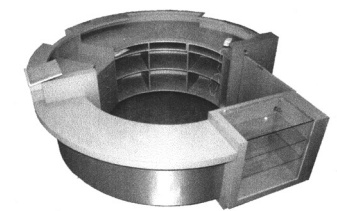
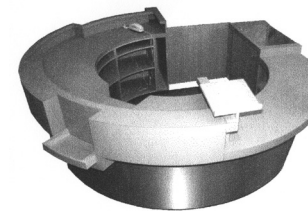
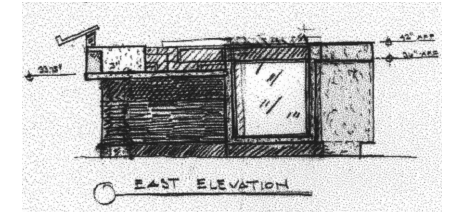
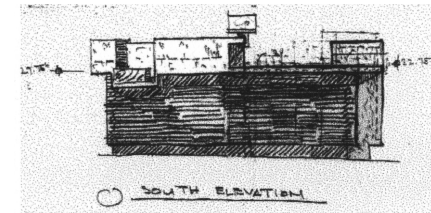
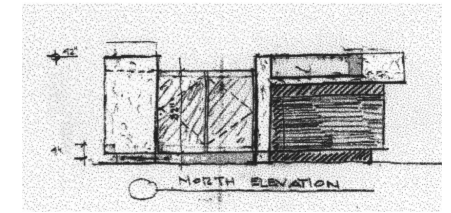
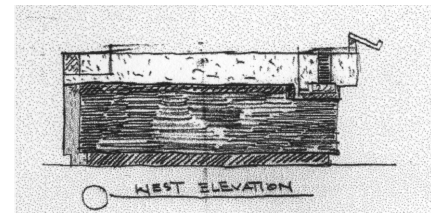
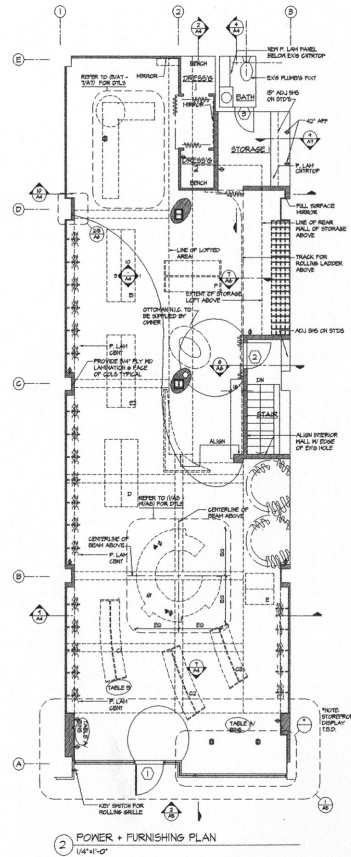


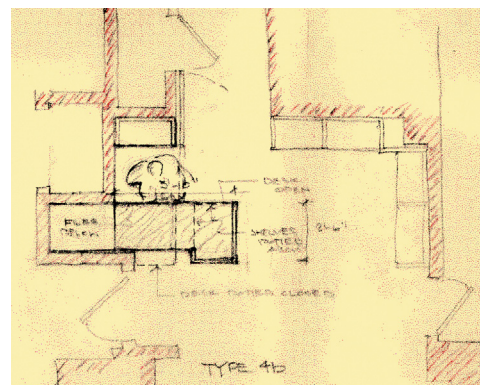
Lee Baumann Lingerie Shop -NYC- 1996

Lee Baumann Lingerie Shop, a well-known Greenwich Village retail institution, has succeeded for over 50 years not because of slick marketing but through strong customer service and its one-on-one approach to retailing. The hallmark of its identity has been in the broad range of merchandise it has made available to its clientele.

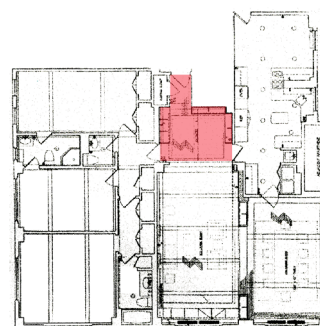
The challenge was to organize and provide storage and display customized for this broad range of merchandise conceived to be more than the sum of its parts. The project sought to create an image for the store by reinventing and re-deploying the tried and true storage fixtures making them the actual decorative appointments. In doing so, each type of merchandise is identifiable through its storage thereby conceiving the store as multiple "stor(ages)" within as single shell or envelope.



sales counter with integrated merchandise display



concept study



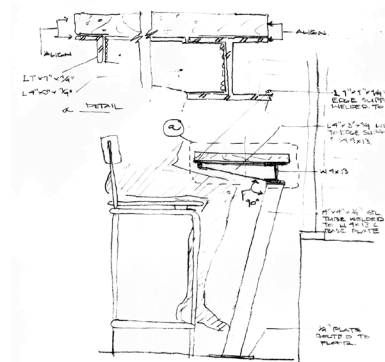
plan

West Side Residence, New York City - 1996

During construction, after receiving news that they were expecting another child, the clients decided that their study would now become a nursery. It was determined that the only possible location for the study was the foyer. Not only was the foyer the formal entry to the apartment, but as well it was the essential node through which all circulation between the different zones of the house passed. Furthermore it offered no acoustical separation. The studies explore solutions for locating a program, normally associated with privacy and quiet, in the most public and dynamic spaces of the house.

Emerald Planet Window Counter, New York City - 1996

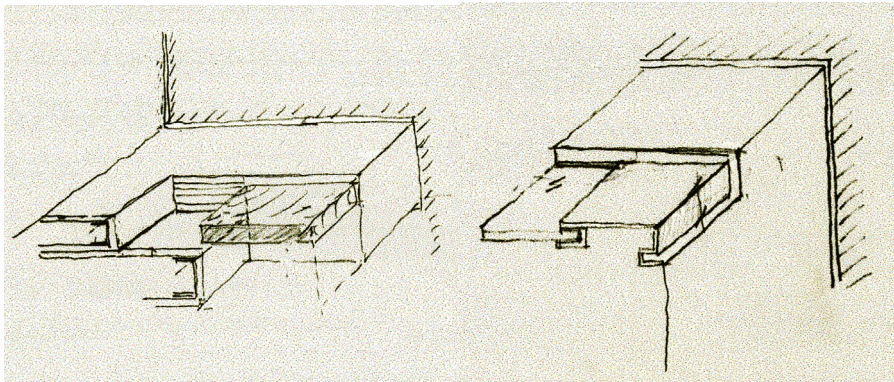
The task was to design a stone window counter. The studies explore the possibilities of supporting the stone counter using a single horizontal support spanning between existing piers. The structural properties of sheet metal and bent re-bar were explored as various beam elements. The final solution employed a single vertical support at mid-span.



sketch



interior with view to window bar



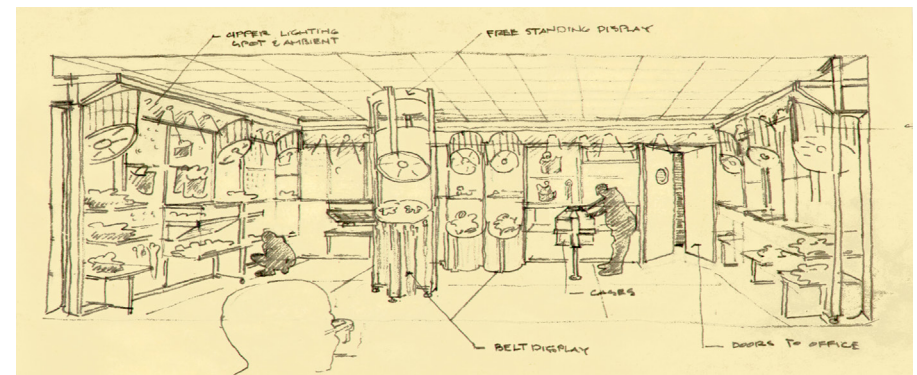
corner details

ACTV Conference Rooms, New York City - 1996

At the final stage of a larger office renovation, the project turned to the design of two conference rooms; one permanent and public, intended for general use and the other "transitory" and private serving as the CEO's personal conference room. The latter is "transitory" for the fact that it is formed when an active circulation corridor is transformed for periods of temporary occupation. Though the two rooms are remote from one another, the intention was to establish, through detailing, a dialogue which would investigate the common program by way of difference. Whereas the public conference room is symmetrical, transparent and expresses permanence through stasis, the private conference room is asymmetrical and opaque evoking the ephemeral through kinetics.

Empire State Building Model Showroom, New York City -1996

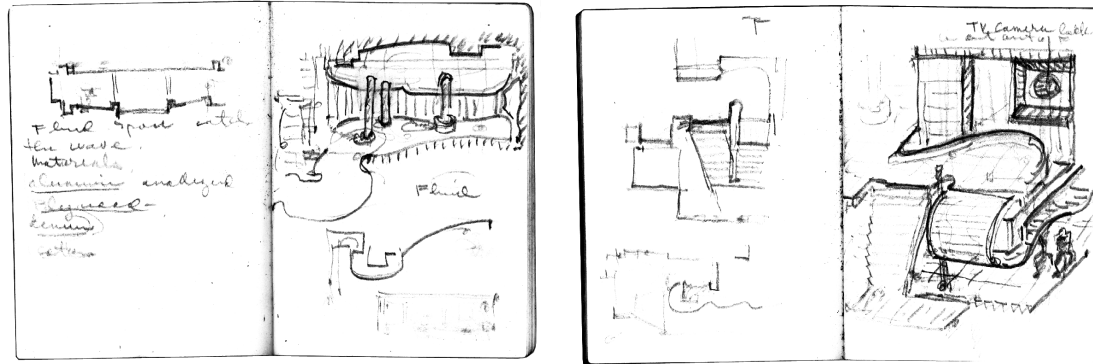
The project was to design a "model showroom" to be used to market retail space in the upper floors of the Empire State Building. The showroom would be for the display of women's leather accessories and would need to be de-mountable since, as each space would lease, the showroom would be moved and set up in the next space to be rented. The project proposed a simple system of wood frames and fabric panels which incorporate lighting and various flexible displays. The frame element can be deployed to be composed into walls or configured as free-standing elements. The theme of portability was further carried through to the detailing of the system as luggage..



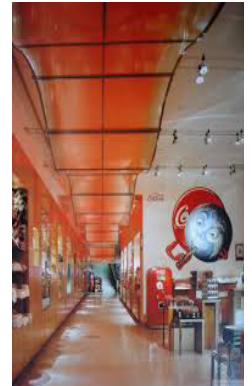
sketch of model showroom

Coca Cola Store Expansion, New York City -1995

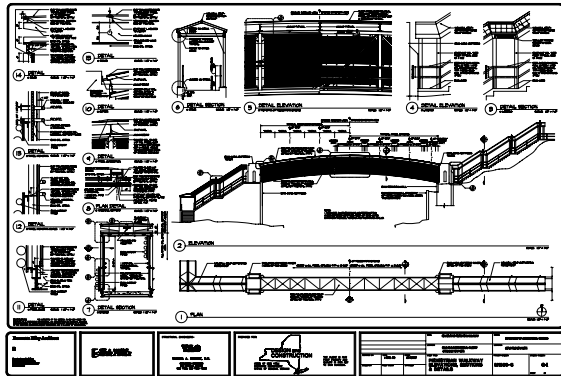
The 7,000 sf expansion of the existing retail store dedicated to the display of antique Coke memorabilia was to extend and transform the formal order of the original store (by the same architect) to include a second story consisting of retail space, a "Coke Bar" and a third floor of offices all linked by new vertical circulation core consisting of a stair and elevator.



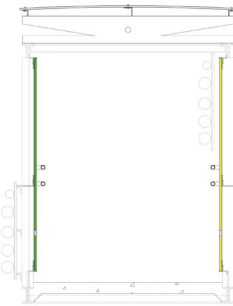
concept sketches showing ground floor wave becoming second floor



existing store with wave



construction documents



section showing color panels

Sing-Sing Pedestrian Bridge, Ossining, New York - 1995

The Sing-Sing Pedestrian Bridge, located at the perimeter of the prison facility, spans the Metro North commuter rail tracks which divides the campus and connects the employee parking lot to the main facility. It serves as a principal means of access to the facility by employees and visitors. The program requested that the existing steel and concrete bridge be refurbished and that an enclosure be designed to provide protection from the strong wind. Also, permanent lighting was to be provided. The design proposed the overlay of multiple thresholds. This overlay of several thresholds lends new body and definition to the space "between" as a space to contemplate the irreconcilable.

Park Avenue Apartment, New York City -1995

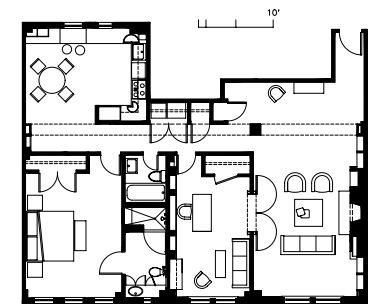
The project involved the 1500 sq. ft. renovation of Park Avenue apartment for a stone merchant. A large French Limestone fireplace appears to be "freestanding" as the new library wall slips behind it.



kitchen with tumbled limestone floor



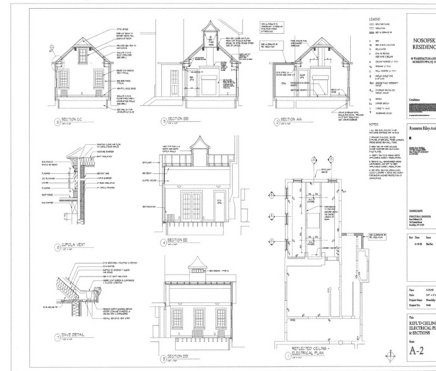
french limestone fireplace



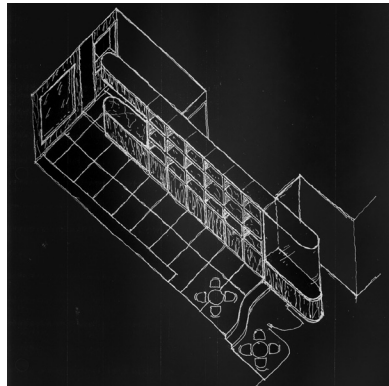
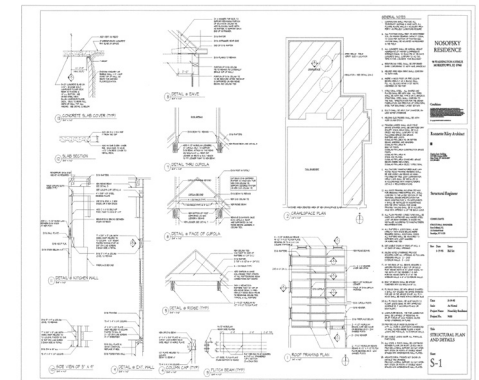
plan

Morristown Residence, Morristown, New Jersey - 1995

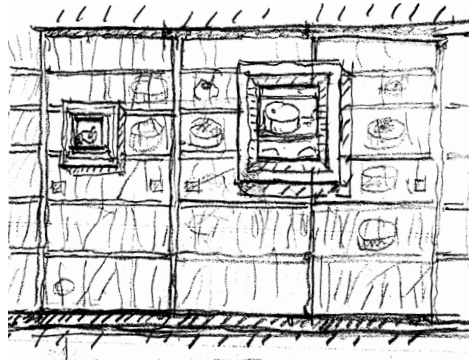
The project consists of two phases. The first phase calls for the renovation of what constitutes the original house on the property as a new core family room. The design consists of a new vaulted ceiling that incorporates an existing cupola. The second phase proposes the design of a freestanding garage as a garden "folly".



construction documents



concept sketches

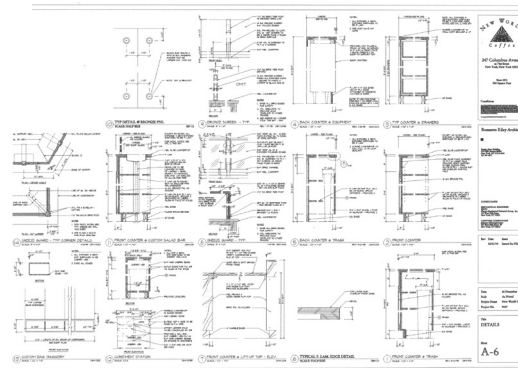


The Honest Baker, New York City - 1995

The Honest Baker is a prototype for a new low-fat bakery, pastry shop and cafe on the upper East Side. Inspired by the remains of an existing Art-Deco storefront and the paintings of Wayne Theibaud, the project extends this existing storefront, and organizes the store about a single display wall for cakes and pastries, with curved service counter echoing the original storefront display on the street. The display wall contains standard freezers set behind an overlay of semi-opaque doors in series. The doors have variable openings which frame select contents within the freezers. The bakery presents the pastries as works of art adopting the ambiance of a gallery in a celebration of the art of guilt-free decadence.

New World Coffee, New York City - 1995

While preserving some of the traditional features of the European cafe, the 700 sf espresso bar and sandwich shop proposes a subtle reinterpretation and transformation of those elements and presents them in a single concept: New World Coffee. These crisp, light surfaces speak of durability, the virtues of cleanliness and ease of maintenance. The materiality of the project for a coffee bar also attests to a commitment to sustaining, and perhaps in more ways than one, the uniquely vigorous fast-paced life of the New Yorker.



construction documents



view of service counter