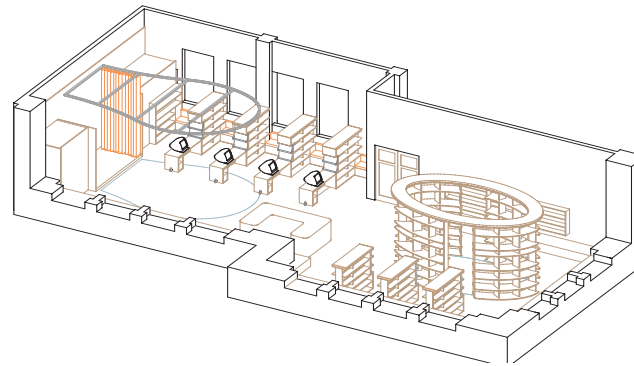


Public Schools Prototype Library, New York City-2001

The project proposes a new prototype for New York City Public School Libraries. Bookshelves line the perimeter to facilitate supervision while a permeable elliptical reading room and curtained theater support solitary contemplation and collective play respectively. Custom furniture was designed to be maximally adaptable and flexible within the diverse learning environments of the library. The prototype was to be implemented in a "roll out" process to renovate all 650 elementary level New York City Public School libraries.



ps 19-axonometric of library prototype



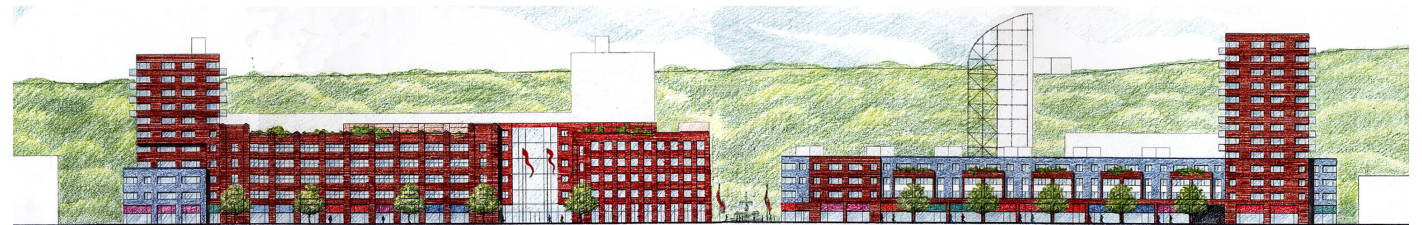
ps19-furniture prototype in use



monroe center-rendering- view of interior market atrium-phase 1

Monroe Center for the Arts Master Plan, Hoboken, New Jersey-2000

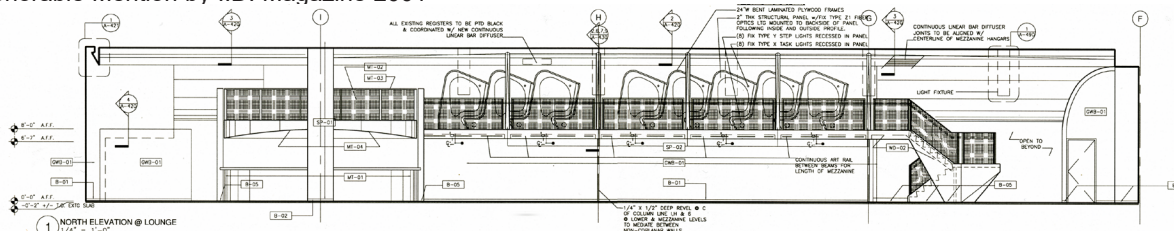
The master plan for an 8 acre site accommodates 1.1 million sf of office, residential, retail and entertainment facilities. In anticipation of a light rail commuter line being introduced just adjacent to the property, the owners were looking at options to maximize the multi-use development rights for the existing buildings along with several adjacent parcels which they owned.



monroe center-monroe street rendering- S3.0

Virgin Atlantic Clubhouse, JFK Terminal One, New York City- 2000

The 6000sf first-class airport lounge provides state-of-the-art amenities to the discriminating traveler. The custom furniture designed for the project was selected by Interior Design Magazine for its Future Furniture Exhibition and was awarded Honorable Mention by I.D. Magazine 2001



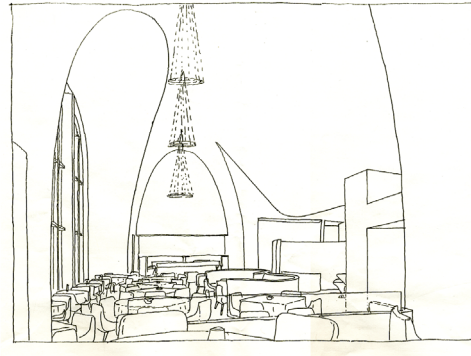
virgin atlantic clubhouse-elevation looking at suspended mezzanine with private workstations



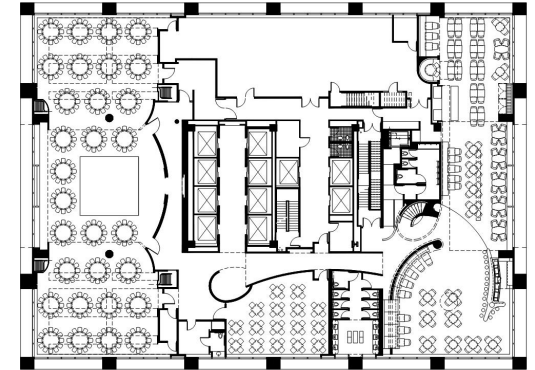
virgin atlantic clubhouse- view of private workstations

Equitable Restaurant, Midtown, New York City- 2000

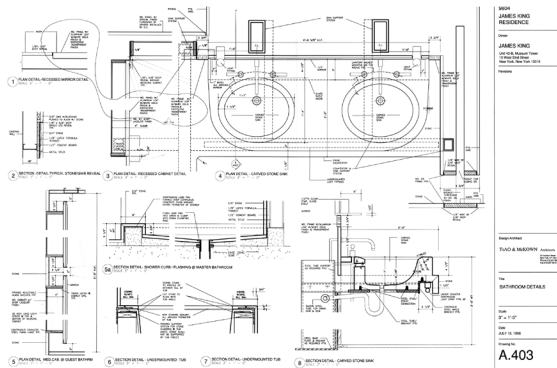
The project, for one of NYC's premier restaurateurs, was for a 24,000 sf restaurant, grille, bar and banqueting complex at the top of the Equitable Building in NYC's midtown theater district.



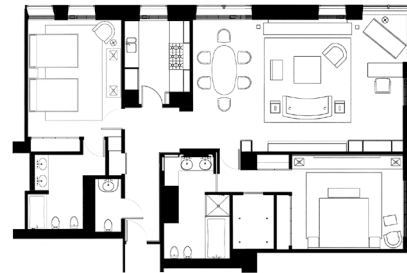
upper level restaurant



lower level plan- banquet hall



custom carved stone sink



plan

Museum Tower Apartment, West 53rd Street, New York City 2000

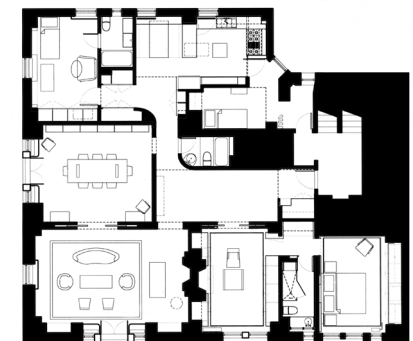
The project involved a 2,200 sf apartment renovation in the Museum Tower. The project included the design of an extensive custom furnishings and accessories package.

Central Park West Apartment, New York City 1998

The project involved the 3500 sf apartment renovation for a collector of contemporary photography. The project included the design of an extensive custom furnishings and accessories package.



view of study



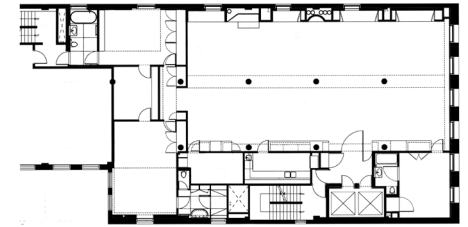
plan

Soho Loft, New York City 1997

The project involved the 4,500 sf conversion of a former tie factory for a collector of Oceanic Art. The project included the design of an extensive custom furnishings and accessories package



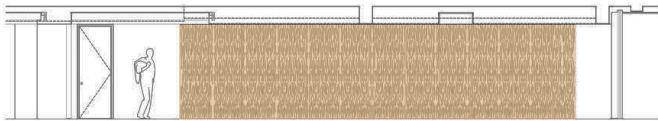
view of main living space



plan

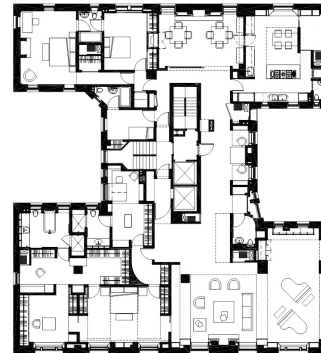


sandblasted oak sample 1:1



sandblasted oak wall at gallery

plan



East 62nd Street Apartment, New York City 1997

The 5500 sf apartment renovation involved joining two apartments in a landmarked area for an acclaimed international clothing designer. The project was eventually completed in 2005 with minor modifications to the original design.